

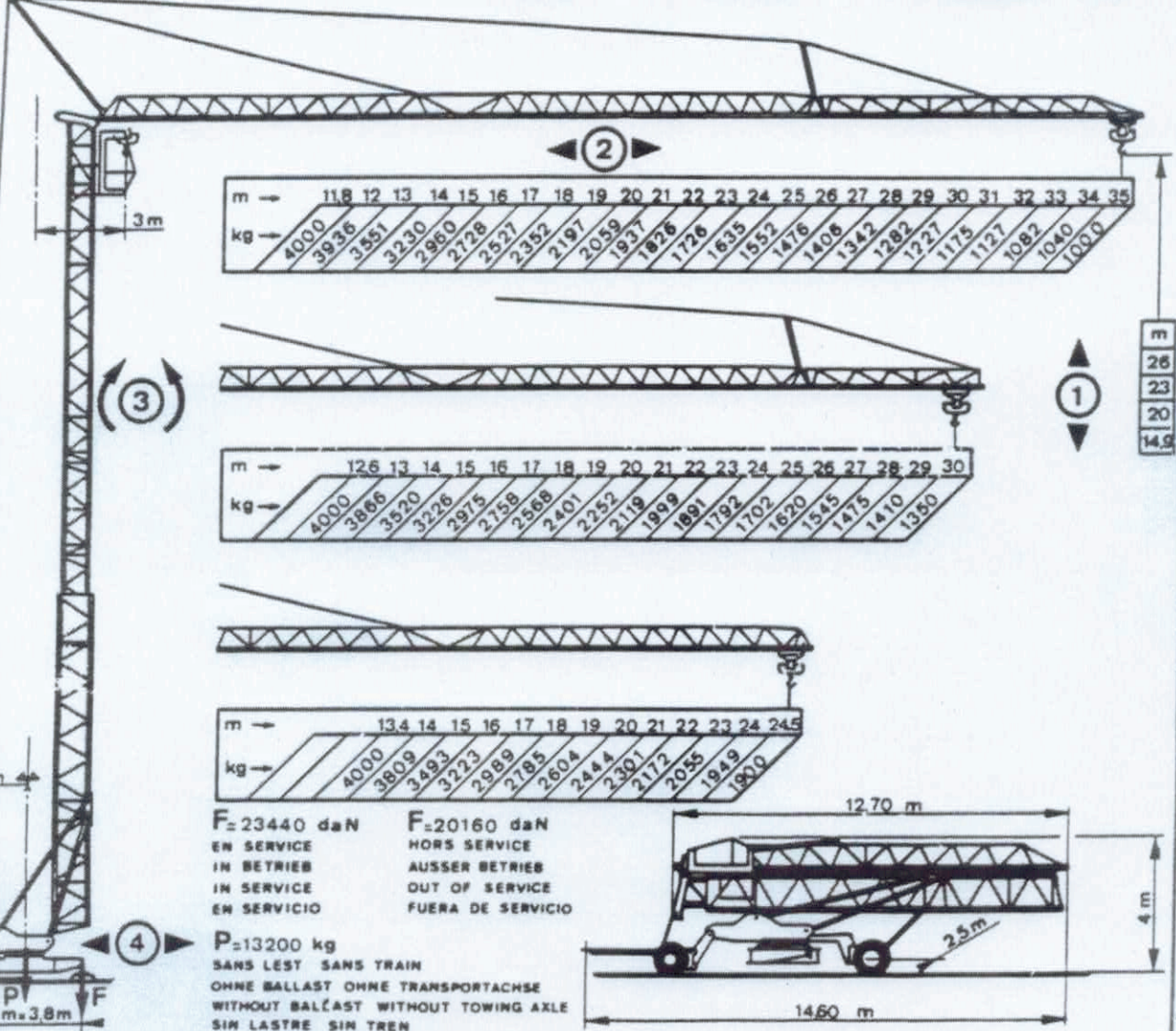
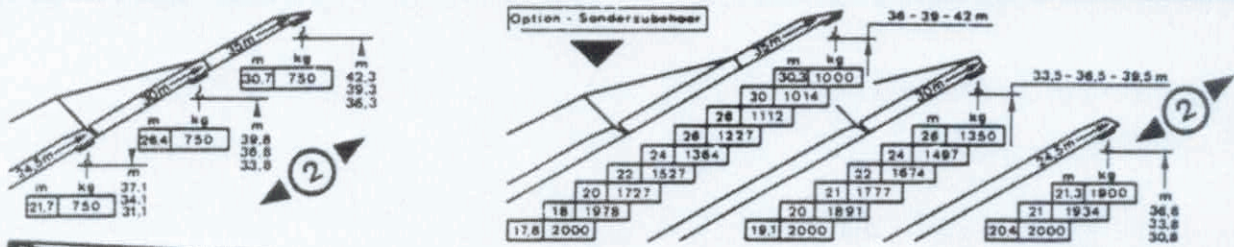
Schaltplan

Potain 331B

62918

1989

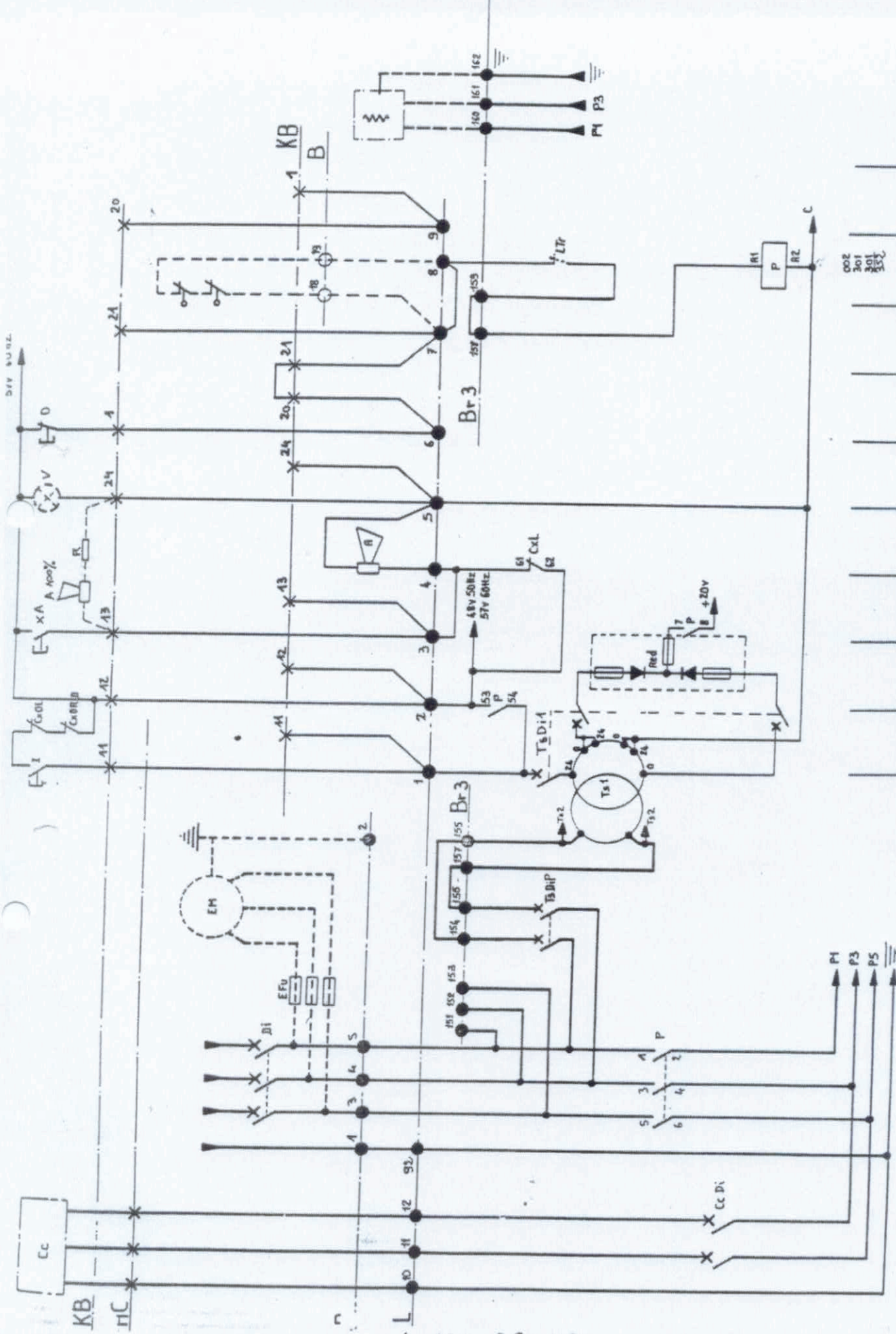
Alter Hubmotor (Q-11439-42)



50Hz	60Hz	kg	m/mn		kW	380V - 50Hz = 20KVA	440V 60Hz = 24KVA		
15 TDPC 10			4000	4,15	4,9	3,7	3D2V4	22-44 m/mn	3kW
			2000	8,3	9,9	4,4		26-52 m/mn	3,6kW
			4000	12,5	15	11	RCV 22	0 → 0,8 tr/mn	2,2 kW
			2000	25	30	13,2		0 → 0,96 tr/mn	2,2 kW
			2000	25	30	11	TVD122	25 m/mn	2 = 1,5 kW
			1000	50	60	13,2		30 m/mn	2 = 1,5 kW

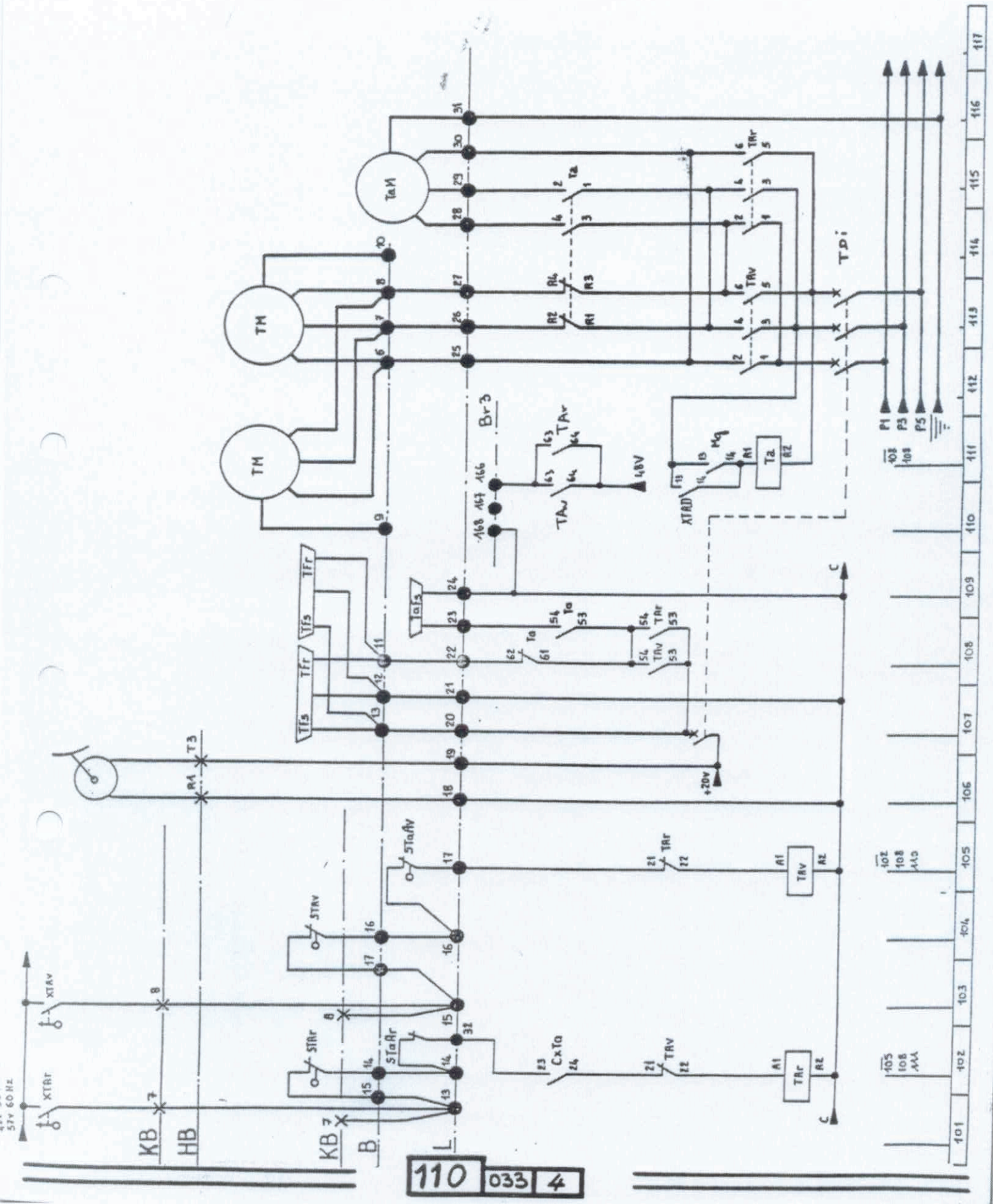
SUBJECT TO MODIFICATION

82481



001	002	003	004	005	006	007	008	009	010
-----	-----	-----	-----	-----	-----	-----	-----	-----	-----

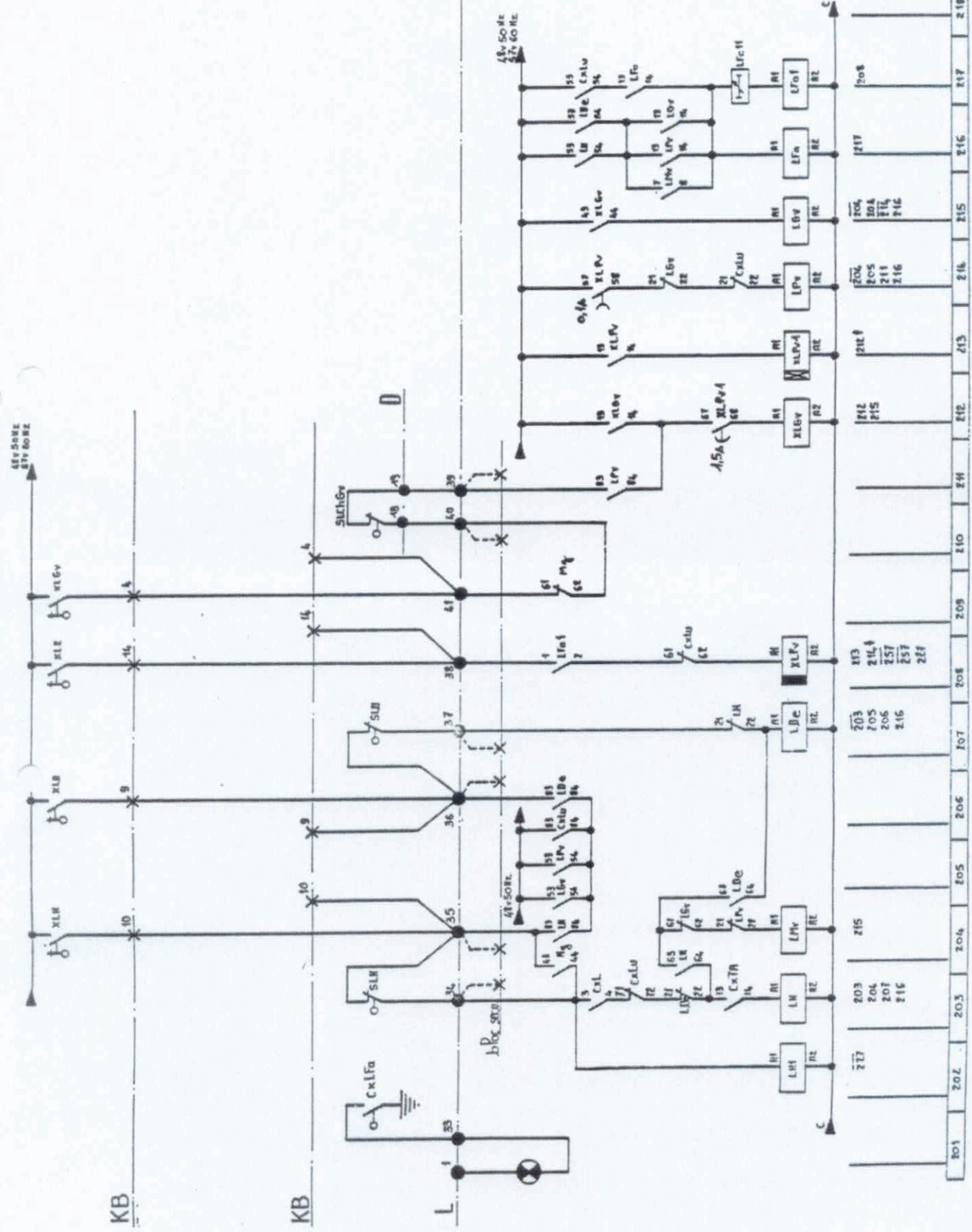
A-100-38-02



110 033 4

101	102	103	104	105	106	107	108	109	110	111	112	113	114	115	116	117
-----	-----	-----	-----	-----	-----	-----	-----	-----	-----	-----	-----	-----	-----	-----	-----	-----

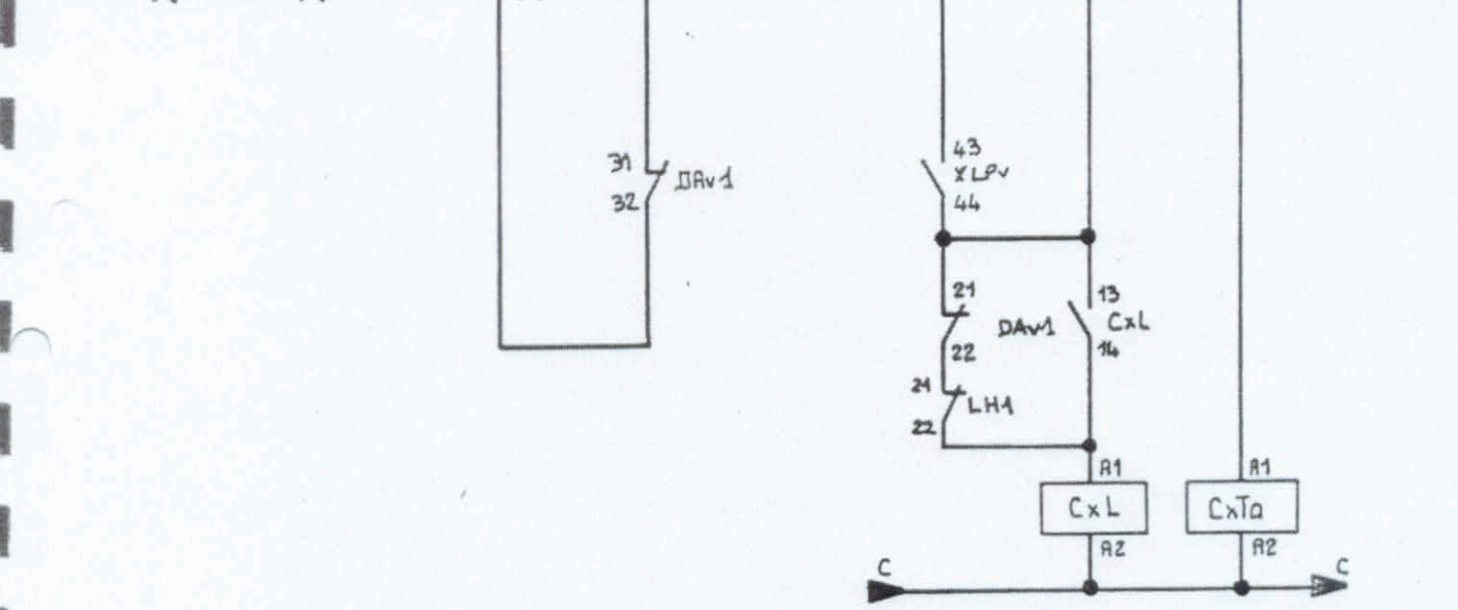
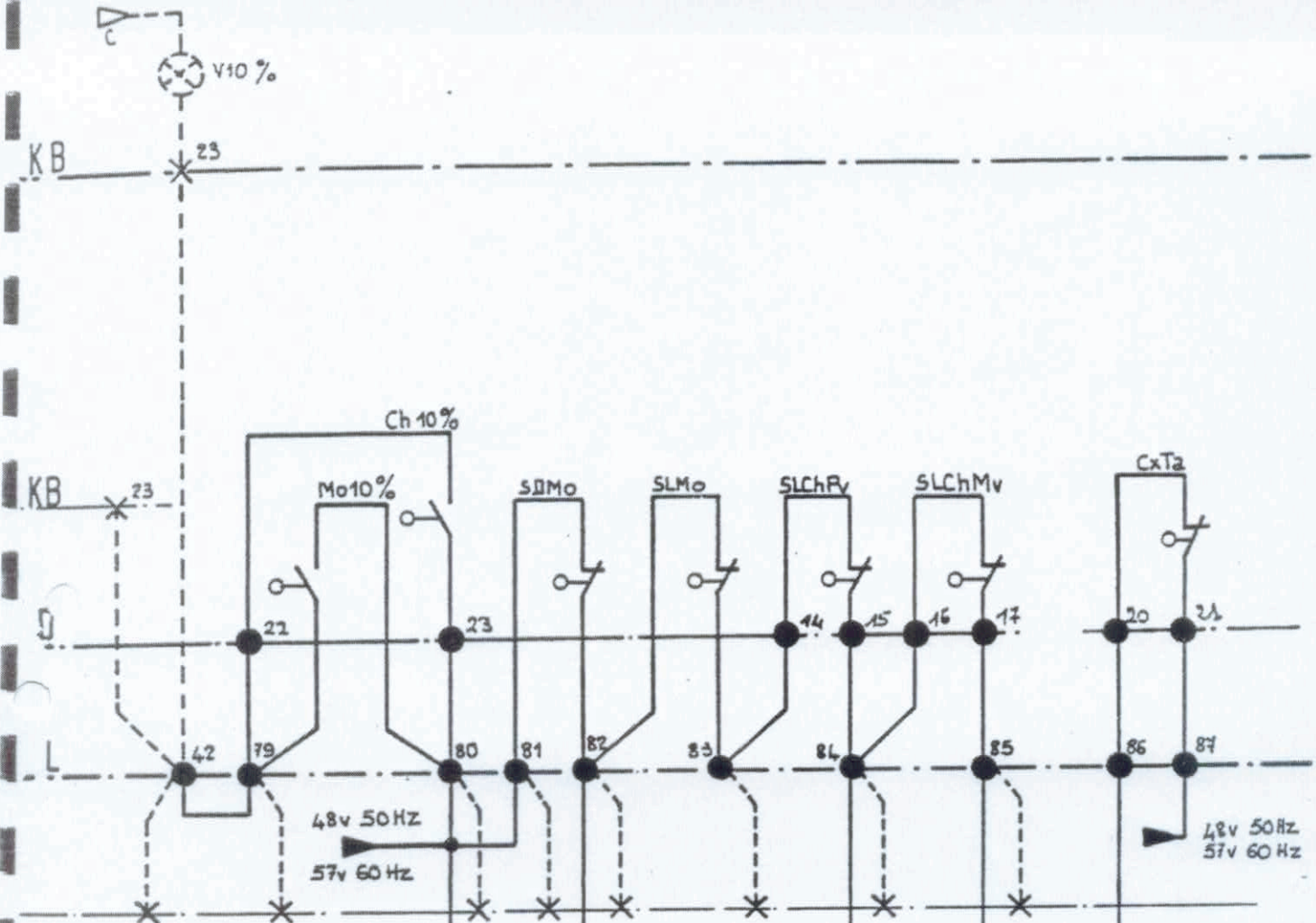
120 027 2



KB

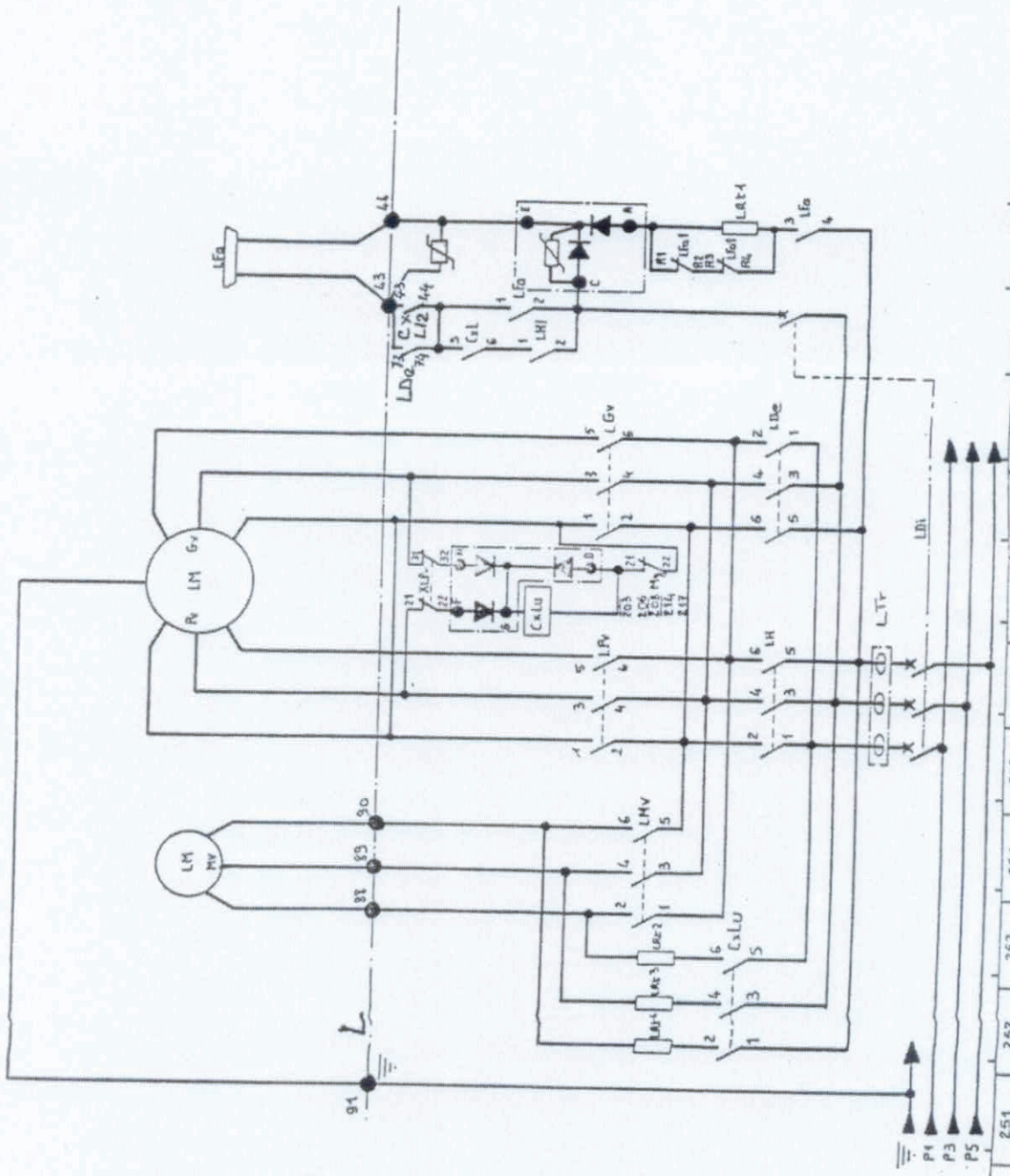
KB

201	202	203	204	205	206	207	208	209	210	211	212	213	214	215	216	217	218	219	220
-----	-----	-----	-----	-----	-----	-----	-----	-----	-----	-----	-----	-----	-----	-----	-----	-----	-----	-----	-----



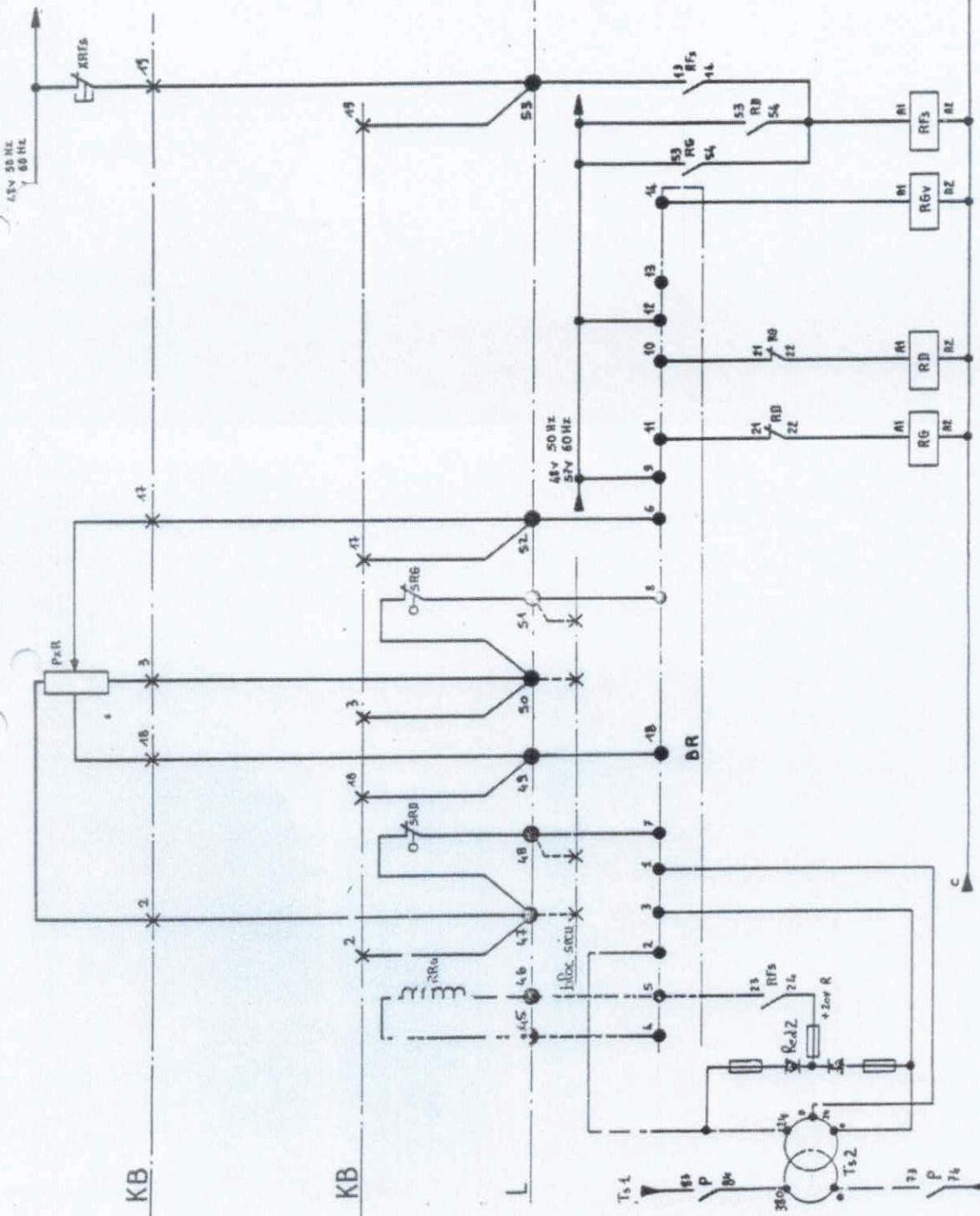
221	222	223	224	225	226	227	228	229	230
							223	102 203 403 404	

A 00 122 12 0 1



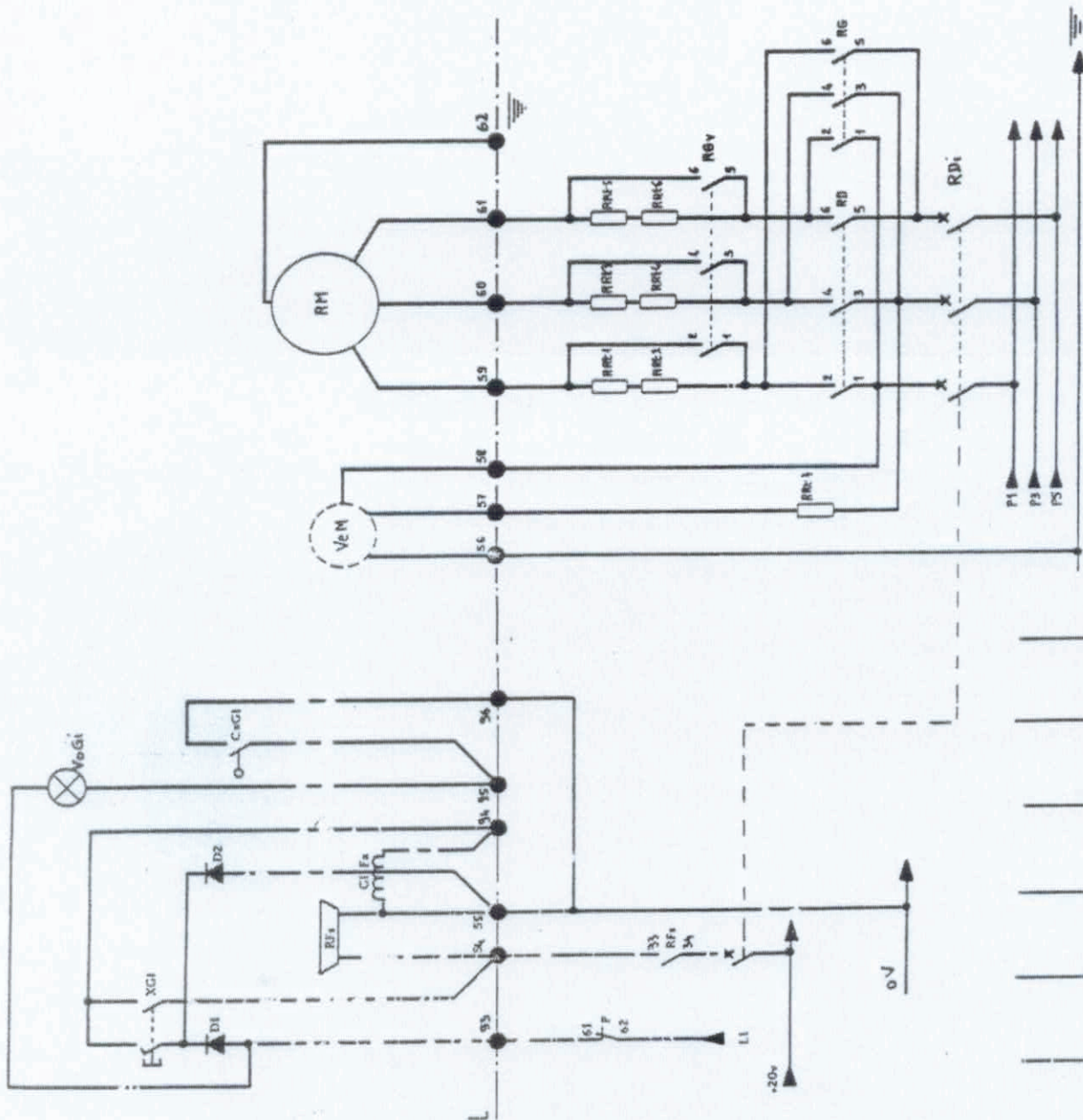
125 036 0

251 252 253 254 255 256 257 258 259 260 261 262 263 264 265 266 267 268 269



130-22-01

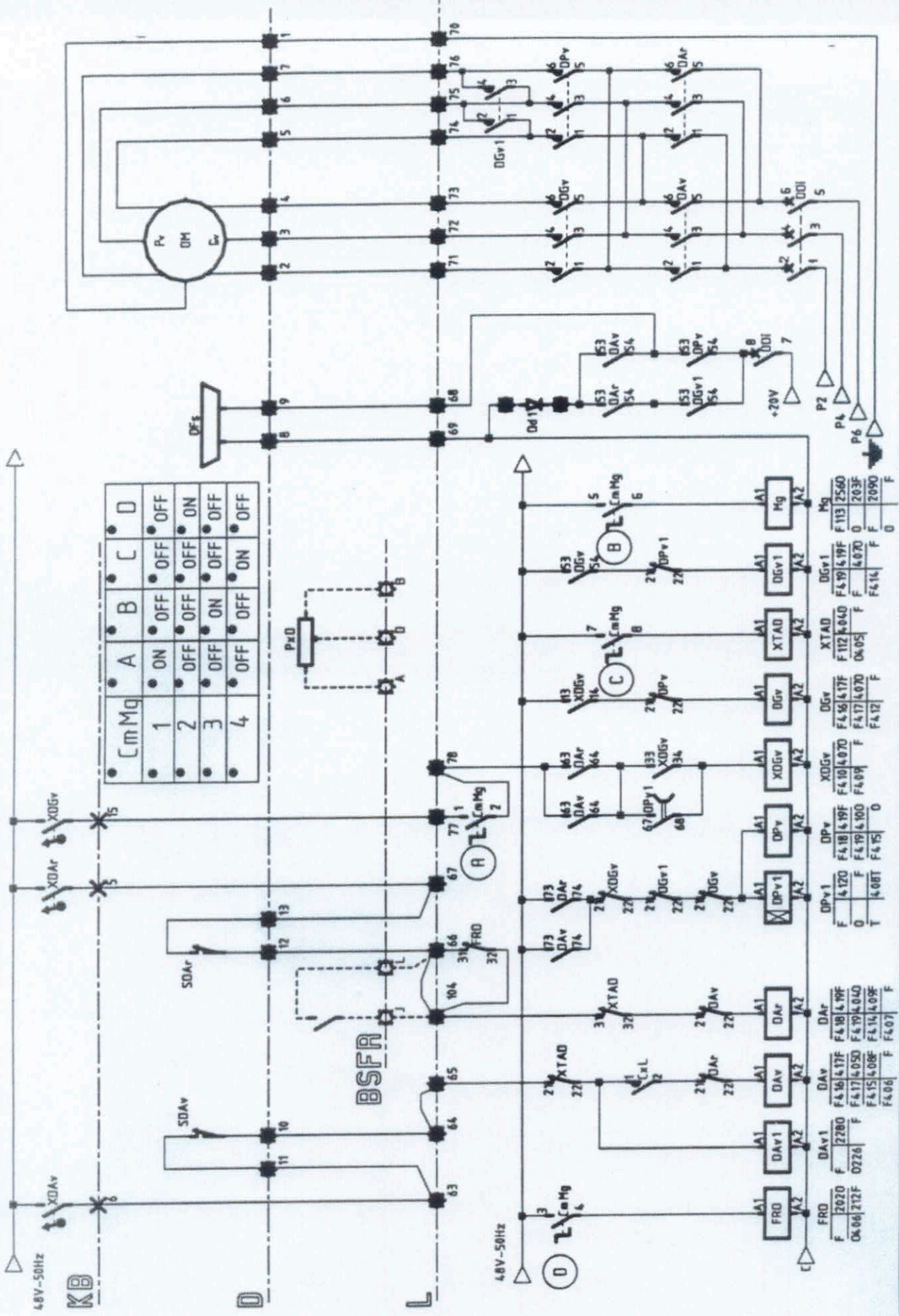
301	302	303	304	305	306	307	308	309	310	311	312	313	314	315	316	317	318	319	320	
										310										
									311											
									318											
									316											
									314											
									313											
									312											
									311											
									310											
									309											
									308											
									307											
									306											
									305											
									304											
									303											
									302											
									301											



358	352	353	354	355	356	357	358	359	360	361	362	363	364	365	366	367	368	369	370
-----	-----	-----	-----	-----	-----	-----	-----	-----	-----	-----	-----	-----	-----	-----	-----	-----	-----	-----	-----

135 24 02

135-24-02



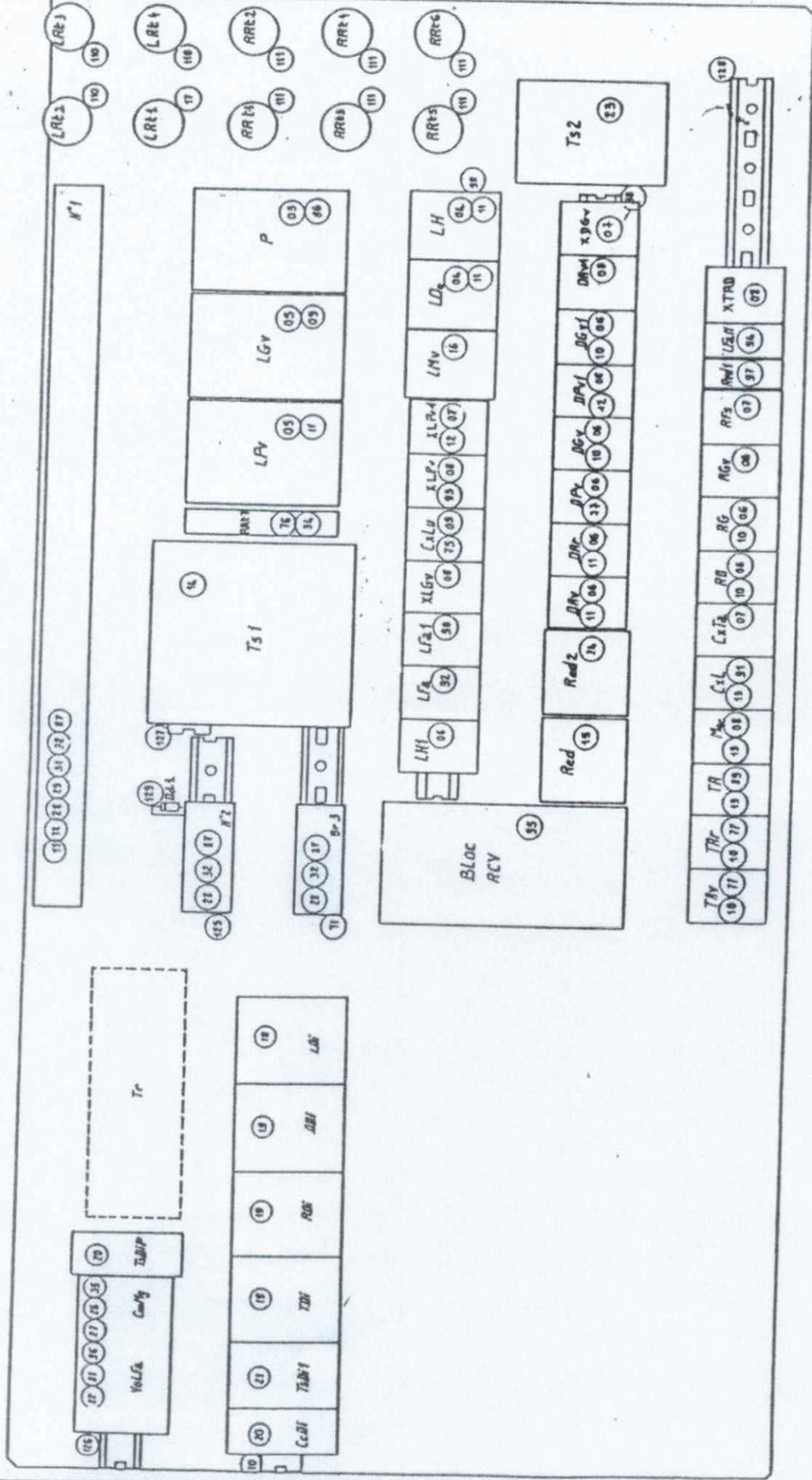
CmMg	A	B	C	D
1	ON	OFF	OFF	OFF
2	OFF	OFF	OFF	ON
3	OFF	ON	OFF	OFF
4	OFF	OFF	OFF	ON

Mg	F 113 2560
DGv1	F 4.19 4.19F
DGv2	F 4.0 0
DPv1	F 4.16 4.17F
DPv2	F 4.17 4.070
DPv3	F 4.12
DPv4	F 4.18 4.19F
DPv5	F 4.19 4.190
DPv6	F 4.08T 4.15
XTAD	F 112 8060
XTAD1	F 112 8060
XTAD2	ON 05
XAD1	F 4.16 4.17F
XAD2	F 4.17 4.070
XAD3	F 4.12
XAD4	F 4.18 4.19F
XAD5	F 4.19 4.190
XAD6	F 4.08T 4.15
XAD7	F 4.16 4.17F
XAD8	F 4.17 4.070
XAD9	F 4.12
XAD10	F 4.18 4.19F
XAD11	F 4.19 4.190
XAD12	F 4.08T 4.15
XAD13	F 4.16 4.17F
XAD14	F 4.17 4.070
XAD15	F 4.12
XAD16	F 4.18 4.19F
XAD17	F 4.19 4.190
XAD18	F 4.08T 4.15
XAD19	F 4.16 4.17F
XAD20	F 4.17 4.070
XAD21	F 4.12
XAD22	F 4.18 4.19F
XAD23	F 4.19 4.190
XAD24	F 4.08T 4.15
XAD25	F 4.16 4.17F
XAD26	F 4.17 4.070
XAD27	F 4.12
XAD28	F 4.18 4.19F
XAD29	F 4.19 4.190
XAD30	F 4.08T 4.15
XAD31	F 4.16 4.17F
XAD32	F 4.17 4.070
XAD33	F 4.12
XAD34	F 4.18 4.19F
XAD35	F 4.19 4.190
XAD36	F 4.08T 4.15
XAD37	F 4.16 4.17F
XAD38	F 4.17 4.070
XAD39	F 4.12
XAD40	F 4.18 4.19F
XAD41	F 4.19 4.190
XAD42	F 4.08T 4.15
XAD43	F 4.16 4.17F
XAD44	F 4.17 4.070
XAD45	F 4.12
XAD46	F 4.18 4.19F
XAD47	F 4.19 4.190
XAD48	F 4.08T 4.15
XAD49	F 4.16 4.17F
XAD50	F 4.17 4.070
XAD51	F 4.12
XAD52	F 4.18 4.19F
XAD53	F 4.19 4.190
XAD54	F 4.08T 4.15
XAD55	F 4.16 4.17F
XAD56	F 4.17 4.070
XAD57	F 4.12
XAD58	F 4.18 4.19F
XAD59	F 4.19 4.190
XAD60	F 4.08T 4.15
XAD61	F 4.16 4.17F
XAD62	F 4.17 4.070
XAD63	F 4.12
XAD64	F 4.18 4.19F
XAD65	F 4.19 4.190
XAD66	F 4.08T 4.15
XAD67	F 4.16 4.17F
XAD68	F 4.17 4.070
XAD69	F 4.12
XAD70	F 4.18 4.19F
XAD71	F 4.19 4.190
XAD72	F 4.08T 4.15
XAD73	F 4.16 4.17F
XAD74	F 4.17 4.070
XAD75	F 4.12
XAD76	F 4.18 4.19F
XAD77	F 4.19 4.190
XAD78	F 4.08T 4.15
XAD79	F 4.16 4.17F
XAD80	F 4.17 4.070
XAD81	F 4.12
XAD82	F 4.18 4.19F
XAD83	F 4.19 4.190
XAD84	F 4.08T 4.15
XAD85	F 4.16 4.17F
XAD86	F 4.17 4.070
XAD87	F 4.12
XAD88	F 4.18 4.19F
XAD89	F 4.19 4.190
XAD90	F 4.08T 4.15
XAD91	F 4.16 4.17F
XAD92	F 4.17 4.070
XAD93	F 4.12
XAD94	F 4.18 4.19F
XAD95	F 4.19 4.190
XAD96	F 4.08T 4.15
XAD97	F 4.16 4.17F
XAD98	F 4.17 4.070
XAD99	F 4.12
XAD100	F 4.18 4.19F

0140 094 2

CR5 4349F8E

401 402 403 404 405 406 407 408 409 410 411 412 413 414 415 416 417 418 419 420



REP REFERENCE

QTE S

DESIGNATION

BEZEICHNUNG

DESCRIPTION

DESIGNAZIONE

K-58410-66	ARMOIRE F C15HP+RCV4D+T	SCHALTSCHRANK	CONTROL-PANEL	APPARECCHIATURA
001	N-58410-92	Schaltschrank	Control-panel	Apparecchiatura
002	P-58410-93	Schrankmontageplatte	Panel fixing plate	Piastra isolante
003	H-04411-70	Kontaktgeber	Switch	Contattore
003A	K-04411-95	Spule	Coil	Bobina
004	Q-11411-13	Kontaktgeber	Switch	Contattore
004A	J-04411-94	Spule	Coil	Bobina
005	Z-04411-39	Kontaktgeber	Switch	Contattore
005A	K-04411-95	Spule	Coil	Bobina
006	L-11411-09	Kontaktgeber	Switch	Contattore
006A	H-04411-93	Spule	Coil	Bobina
007	U-11411-17	Relais	Relay	Rele
007A	H-04411-93	Spule	Coil	Bobina
008	T-11411-16	Relais	Relay	Rele
008A	H-04411-93	Spule	Coil	Bobina
009	F-04411-45	Block	Block	Blocco
010	F-04411-68	Block	Block	Blocco
011	G-04411-46	Block	Block	Blocco
012	H-04411-47	Zeitschalter	Time-delay	Temporizzatore
013	E-04411-44	Block	Block	Blocco
014	G-14406-11	Transformator	Transformer	Trasformatore
015	N-14406-17	Gleichrichter	Rectifier	Raddrizzatore
015A	G-02412-76	Sicherungspatrone	Fuse cartridge	Cartuccia fusibile
015B	M-13412-79	Sicherungspatrone	Fuse cartridge	Cartuccia fusibile
016	R-11411-14	Kontaktgeber	Switch	Contattore
016A	J-04411-94	Spule	Coil	Bobina
017	E-00424-39	Widerstand	Resistance	Resistenza
018	Z-13412-90	Schutzschalter	Autom.circuitbreaker	Interruttore sovra
019	V-13412-87	Schutzschalter	Autom.circuitbreaker	Interruttore sovra
020	X-13412-89	Schutzschalter	Autom.circuitbreaker	Interruttore sovra

REP REFERENCE	QTE S	DESIGNATION	BEZEICHNUNG	DESCRIPTION	DESIGNAZIO
021	A-13412-68	Disjoncteur 10-16a tri	Schutzschalter	Autom. circuitbreaker	Interruttore
022	G-02412-76	Cartouche-fus 10x38 ur16a	Sicherungspatrone	Fuse cartridge	Cartuccia fus
023	E-14406-09	Transfo 100va 2x24	Transformator	Transformer	Trasformatore
024	E-11406-66	Redresseur 12a positif	Gleichrichter	Rectifier	Raddrizzatore
024A	G-02412-76	Cartouche-fus 10x38 ur16a	Sicherungspatrone	Fuse cartridge	Cartuccia fus
024B	N-02412-59	Cartouche-fus 10x38 gl 6a	Sicherungspatrone	Fuse cartridge	Cartuccia fus
025	M-13412-79	Cartouche-fus 10x38 gl 6a	Sicherungspatrone	Fuse cartridge	Cartuccia fus
026	Z-46413-99	Cartouche-fus 10x38gl 12a	Sicherungspatrone	Fuse cartridge	Cartuccia fus
027	R-07515-17	Commutateur 4 positions	Platte	Plate	Targa
028	Q-08408-25	Plaque-repere 4 positions	Platte	Plate	Targa
029	L-08408-90	Borne vis 4mm2 pas 6	Anschlussklemme	Terminal	Morsetti
030	A-10411-64	Borne vis 4mm protect p6	Anschlussklemme	Terminal	Morsetti
031	M-08408-91	Contact auxiliaire f	Kontakt	Contact	Contatto
032	U-08408-29	Borne vis 6mm protect p8	Anschlussklemme	Terminal	Morsetti
033	N-02412-59	Flasque borne 5000	Flansch	Flange	Flangia
034	T-00424-75	Cartouche-fus 10x38 gl 6a	Sicherungspatrone	Fuse cartridge	Cartuccia fus
035	S-65410-32	Support resistance	Tragstueck	Support	Supporto
036	X-01417-01	Coffret146x85x87 perce			
037	R-08408-26	Avertisseur 48v a embase	Hupe	Horn	Claxon
038	W-09414-56	Borne vis 6mm2 pas 8	Anschlussklemme	Terminal	Morsetti
039	X-00027-58	Protecteur borne	Schutz	Protector	Protettore
040	P-01407-27	Tube verre epoxy 6,2x12	Rohr	Pipe	Tubo
041	W-02259-72	Embase f 24x27a equ 2m	Sockel	Socket	Basamento
042	V-01382-26	Toile protection	Blech	Plate	Lamiere
043	X-37460-77	Ressort	Feder	Spring	Molla
044	A-02407-18	Joint-caoutch	Gummidichtung	Rubber seal	Guarnizione in g
045	F-95113-10	Bouchon connecteur	Stopfen	Plug	Tappo
045A	K-02407-04	Bouchon shunt	Stopfen	Plug	Tappo
046	F-02407-46	Connecteur m24x27a	Steckverbindung	Connector	Connessione
047	U-40475-35	Detrompeur-connecteur	Steckerfuehrung	Connector guide	Guida di sicurezza
048	Q-18475-35	Plaque-instruction	Hinweisschild	Indicating plate	Targa di istruzioni
		Plaque code serie	Platte	Plate	Tarza

REP REFERENCE	QTE S	DESIGNATION	BEZEICHNUNG	DESCRIPTION	DESIGNAZIONE
049	X-73475-09	1	Adhesif eclair	Aufkleber	Adesivo
050	N-33410-61	1	Vide-poche armoire elect	Ablage	Svuota-tasca
052	X-00336-01	2	Boulon h m6x15 c15-6	Bolzen	Bullone
053	G-00336-78	1	Boulon h m6x50 c15-6	Bolzen	Bullone
054	M-00325-56	6	Vis cb m4x20 nylon	Schraube	Vite
055	A-00347-07	5	Rondelle w6	Scheibe	Rondella
056	X-11330-93	21	Vis sp	Schraube	Vite
057	V-18345-45	2	Ecrou m6 pour din 35	Mutter	Dado
058	H-00325-29	8	Vis cb m4x16 c15-6	Schraube	Vite
059	E-10045-98	8	FIL h07v-k 1,5 orange	Draht	Filo
060	T-12045-04	50,5	FIL h07v-k 1,5 rouge	Draht	Filo
061	Z-00045-53	27,5	FIL h07v-k 2,5 noir	Draht	Filo
062	U-12045-05	2	FIL h07v-k 2,5 rouge	Draht	Filo
063	C-10045-27	0,8	FIL h07v-k 2,5 vert/jaune	Draht	Filo
064	D-10045-28	2,4	FIL h07v-k 6 vert/jaune	Draht	Filo
065	F-10045-07	1,8	Cable u 750 csv 30 2x1	Kabel	Filo
066	J-01442-41	1	Caisse carton 189x77x60	Kiste	Cavo
067	T-01409-38	3	Clip femelle	Clip	Cassa
068	T-28414-14	70	Passe-fil de 18	Clip	Clips
069	N-02986-21	1	Plaque d'obturation	Drahtdurchfuehrung	Guida
070	Q-02986-23	1	Profil din 35 sp 1400	Platte	Targa
071	T-02986-26	1	Profil din 35 sp 1600	Profilstueck	Profilo
072	G-10410-09	2	Support bornier	Profilstueck	Profilo
073	C-02986-34	3	Plaque d'obturation	Tragstueck	Supporto
074	C-04345-64	1	Ecrou hm4 nylon	Platte	Targa
075	C-11411-93	6	Contacteur3x12atob220venc	Mutter	Dado
075A	H-11411-75	1	Bobine 220v (9-16)	Kontaktgeber	Contattore
076	U-00424-07	1	Resistance 28w 1800 ohms	Spule	Bobina
077	L-11411-09	1	Contacteur 3x12atob48venc	Widerstand	Resistenza
077A	H-04411-93	2	Bobine 48 v	Kontaktgeber	Resistenza
				Spule	Contattore

079	V-00283-32	2	Vits 1/2x20 cl5-6	Schraube	Screw	Vite
080	C-00341-11	2	Ecrou h m6 cl 56	Mutter	Nut	Dado
081	R-02405-26	1	Lampe 48v 2,6w	Gluehbirne	Bulb	Lampada
082	C-46413-33	1	Element signalisation	Element	Element	Elemento
083	U-00350-01	8	Rondelle m 6 n	Scheibe	Washer	Rondella
084	S-13045-53	3	Fil special 2,5mm	Draht	Wire	Filo
085	L-00348-09	4	Rondelle 6	Scheibe	Washer	Rondella
086	G-11411-97	1	Bloc de contact 3f + 1o	Block	Block	Blocco
087	W-08408-31	7	Butee d'arret borne	Anschlag	Stop	Fermo
088	X-00341-07	8	Ecrou h m4 cl 56	Mutter	Nut	Dado
089	L-11411-55	1	Contacteur 12a2o2fb380enc	Kontaktgeber	Switch	Contattore
089A	D-07411-32	1	Bobine 380v (9,12)	Spule	Coil	Bobina
090	W-11411-19	1	Contacteur 12a 2o2fb48enc	Kontaktgeber	Switch	Contattore
090A	H-04411-93	1	Bobine 48 v	Spule	Coil	Bobina
091	K-11411-08	1	Contacteur 4x12a b48v enc	Kontaktgeber	Switch	Contattore
091A	H-04411-93	1	Bobine 48 v	Spule	Coil	Bobina
092	K-11411-08	1	Contacteur 4x12a b48v enc	Kontaktgeber	Switch	Contattore
092A	H-04411-93	1	Bobine 48 v	Spule	Coil	Bobina
093	F-11411-73	1	Temporisateur r 0-3s	Zeitschalter	Time-delay	Temporizzatore
094	D-11411-71	1	Temporisateur el t 0,3s	Zeitschalter	Time-delay	Temporizzatore
095	L-07406-79	1	Bloc-de-cde rotation 6a	Steuerblock	Control block	Gruppo di comando
096	M-46413-42	1	Tete voyant lumin rouge	Kopf	Head	Testa
097	H-15406-39	1	Redresseur frein 220v	Gleichrichter	Rectifier	Raddrizzatore
098	S-02986-25	2	Profil din 35 sp 1500	Profilstueck	Profile	Profilo
099	V-02986-51	2	Profil din 35 sp 1300	Profilstueck	Profile	Profilo
102	Q-11407-68	2	Fiche 10 bornes	Steckerbuchse	Plug-socket	Spina-femmina
103	H-15406-16	1	Boitier reglage rcv	Gehaeuse	Box	Scatola
104	A-15031-19	0,5	Joint cabine	Dichtung	Seal	Giunto
105	D-02031-62	2,6	Joint mousse 25x10 adh	Dichtung	Seal	Giunto
106	A-58410-11	1	Came	Nocken	Cam	Camma
107	P-00341-68	1	Ecrou h ml4 cl 56	Mutter	Nut	Dado

108	E-09520-20	1	Poignee a condamnation	Griff	Maniglia
109	X-09475-52	1	Plaque-instruct	Hinweisschild	Targa di istruzioni
110	R-00424-27	3	Resistance 100w 4,85	Widerstand	Resistenza
111	P-00424-25	6	Resistance 100w 3,36	Widerstand	Resistenza
112	C-00341-11	20	Ecrou h m6 cl 56	Mutter	Dado
113	X-02452-01	20	Rondelle amlante 8,5x40x4	Scheibe	Rondella
114	E-23277-19	10	Tige filetee m6 1175	Stange	Asta
115	L-00348-09	20	Rondelle 6	Scheibe	Rondella
116	E-11421-15	3	Manchon-caoutch	Gummimuffe	Manicotto in gomma
117	E-20421-51	3	Support manchon	Tragstueck	Supporto
118	L-01517-18	1	Porte a buse	Tuer	Porta
119	H-25410-01	1	Grille d'extraction	Gitter	Griglia
121	Q-58410-94	1	Tole ecran	Blech	Lamiara
122	R-58410-95	1	Tole intermediaire	Blech	Lamiara
123	N-49439-31	1	Porte grillagee	Tuer	Porta
124	S-58410-96	1	Profil long 400mm	Profilstueck	Profilo
125	U-02986-27	1	Profil din 35 sp 1750	Profilstueck	Profilo
126	W-02986-52	1	Profil din 35 sp 1200	Profilstueck	Profilo
127	E-02986-59	1	Profil din 35 sp 1150	Profilstueck	Profilo
128	B-02986-56	1	Profil din 35 sp 1450	Profilstueck	Profilo
129	G-03406-59	1	Diode 2a 1000v	Diode	Diodo
130	K-31460-64	1	Joint-caoutch	Gummidichtung	Guarnizione in gomma
131	B-01414-97	1	Passe-fil de 10	Drahtdurchfuehrung	Guida
132	Z-64410-11	1	Tole avant	Blech	Lamiara
133	T-64410-06	2	Arret de porte	Arretierung	Arresto
134	A-00345-46	2	Ecrou hm ml4 classe 56	Mutter	Dado
135	V-14285-49	4	Entretoise 17,2 ep2 130	Distanzstueck	Distanziale
136	W-14406-71	1	Bloc diodes	Block	Blocco
137	M-02520-91	1	Clef manoeuvre	Schluessel	Chiave