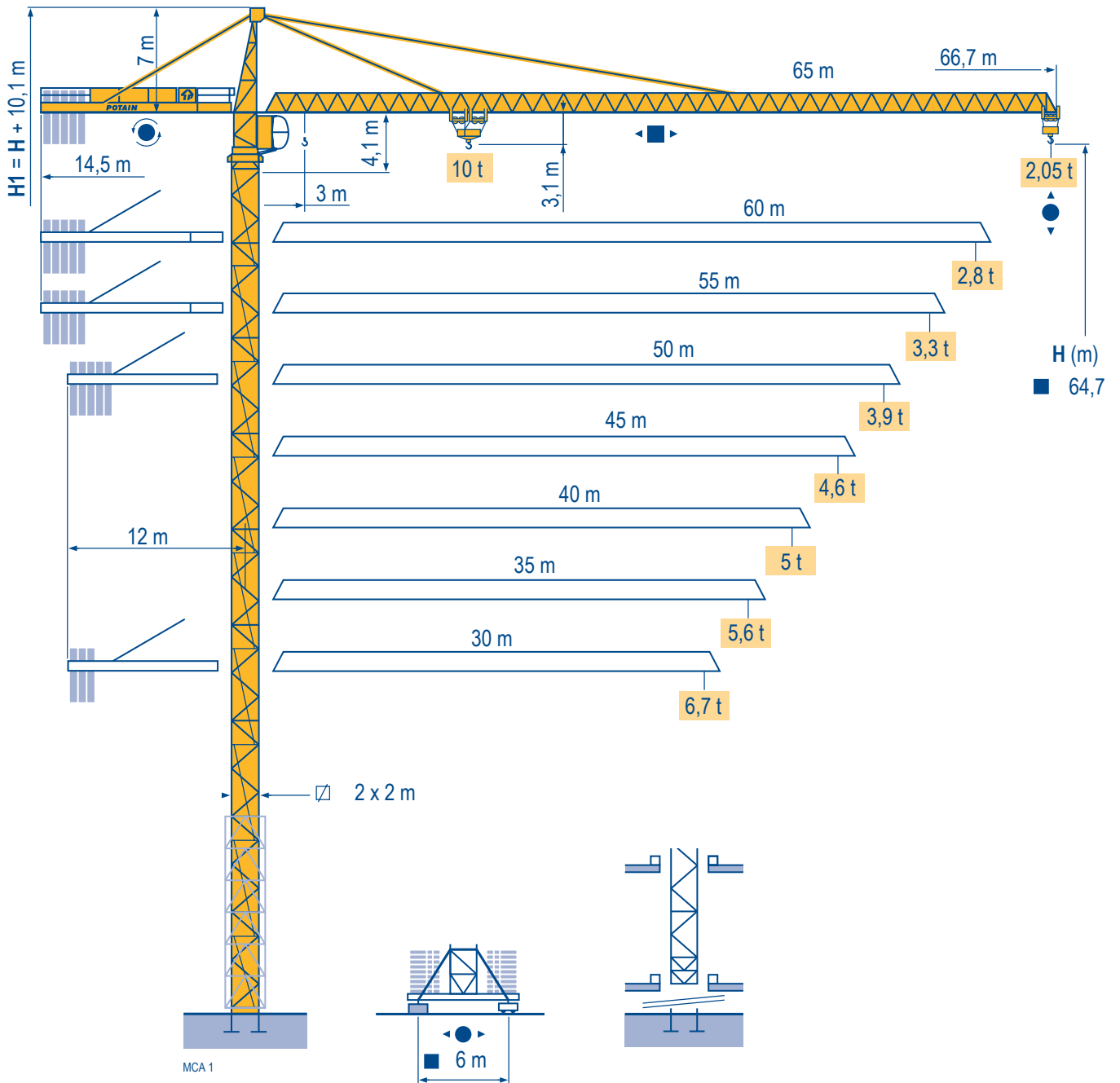


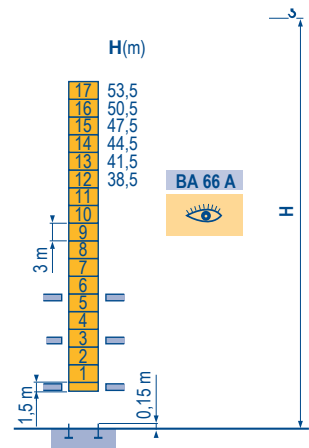
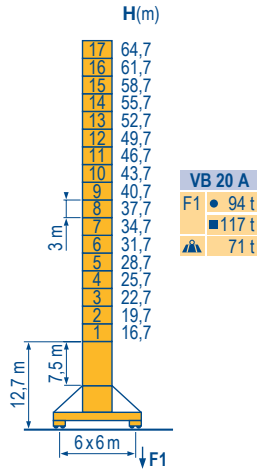
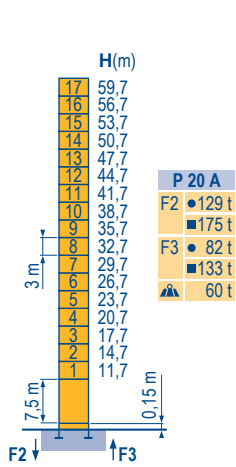
## MC 235 B



**Masts / Reactions**

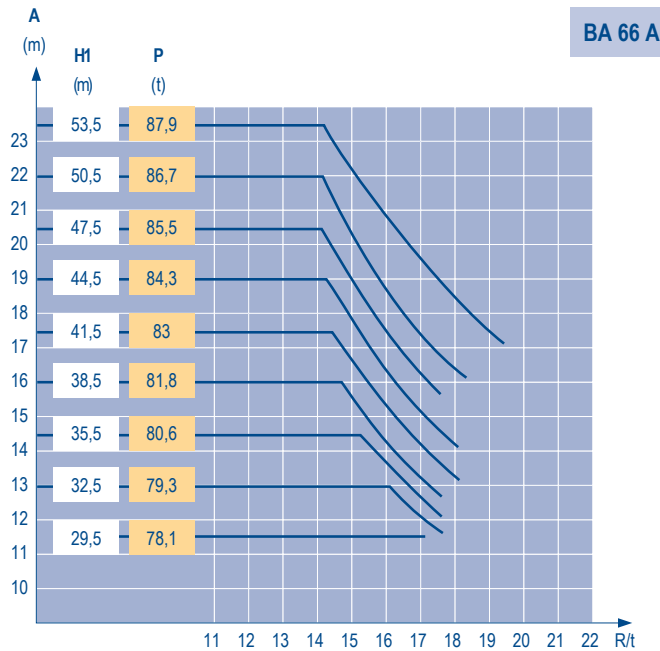
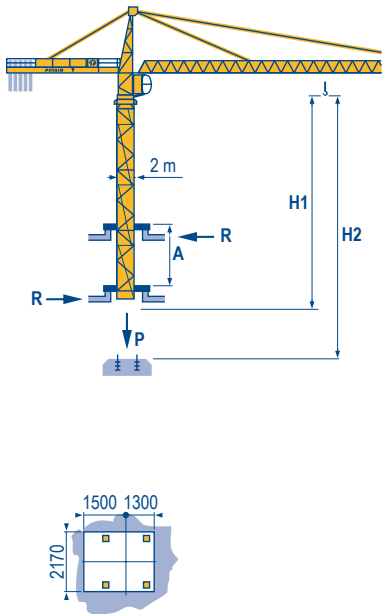
MCA 1

□ 2 m  
 ▣ 30 m ⇒ 65 m



**Climbing crane**

MCA 1



**TOPKIT MC 235 B**

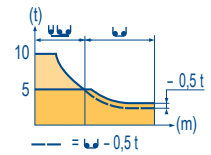
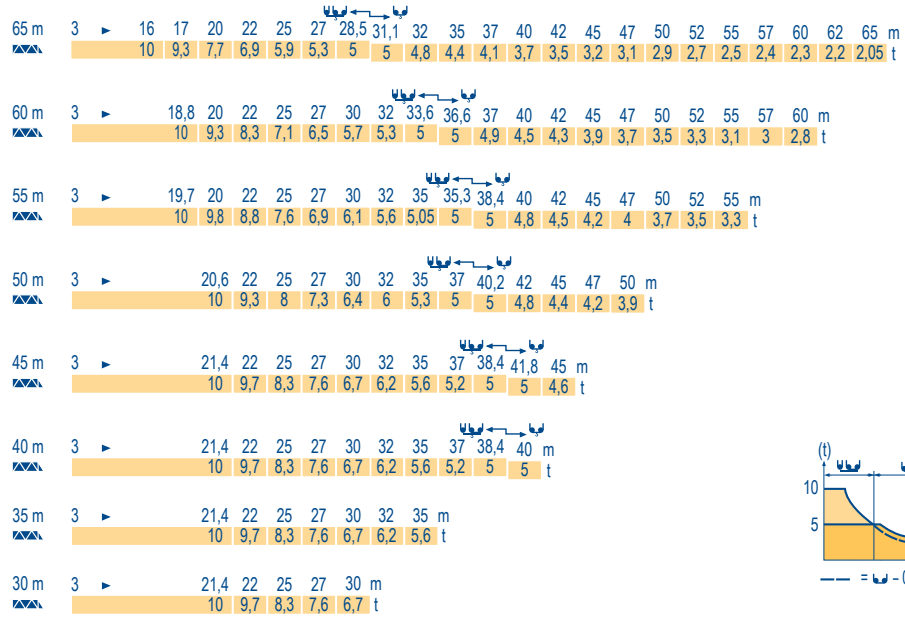


GB

- Reactions in service
- Reactions out of service
- ▲ Without load, ballast (or transport axles), with maximum jib and maximum height.
- 👁 See climbing crane

## Load diagrams

MCA 1



## Counter-jib ballast

MCA 1

		4800 kg - 4200 kg 3400 kg
▲	▲	▲ (kg)
65 m	14,5 m	23 600
60 m	14,5 m	21 700
55 m	14,5 m	20 200
50 m	12 m	23 600
45 m	12 m	21 700
40 m	12 m	19 400
35 m	12 m	16 800
30 m	12 m	14 100

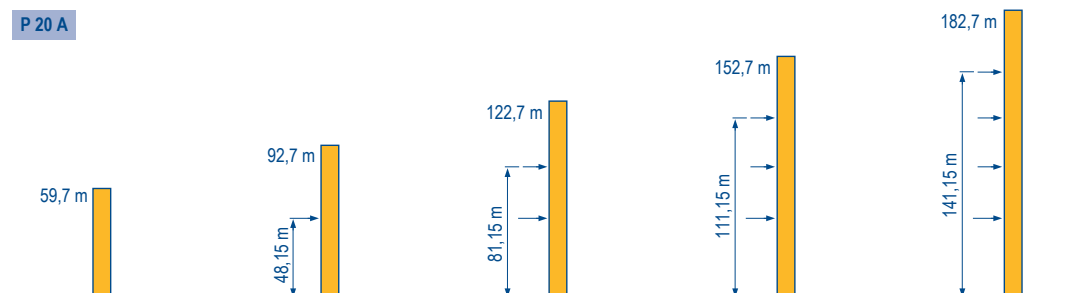
## Base ballast

MCA 1

▣ 2 m	VB 20 A - ●	H (m)	64,7	61,7	58,7	55,7	52,7	49,7	46,7	43,7	40,7	37,7	34,7	31,7	28,7	25,7	22,7	19,7	16,7	13,7
▲ (t)			108	84	72	60	48	36	36	36	36	36	36	36	36	36	36	36	36	36

## Anchorage

MCA 1



## TOPKIT MC 235 B

**POTAIN**

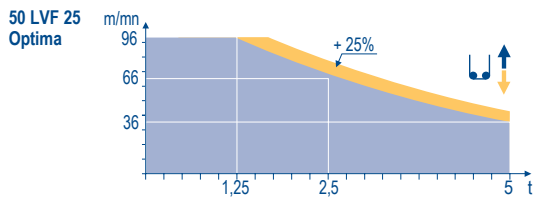
**GB**

- A** Distance between collars
- H1** Crane height
- P** Crane weight (in service)
- R** Horizontal reaction

# Mechanisms

MCA 2

													hp	kW			
	50 LVF 25 Optima	m/min	3 → 12 → 36 → 46 → 66 → 96					1,5 → 6 → 18 → 23 → 33 → 48					50	37	557 m		
		t	5	5	5	3,75	25	1,25	10	10	10	7,5				5	2,5
	6 D3 V4	m/min	10 - 50 (10 t) - 100 (5t)										6	4,4			
	RCV 185	rpm	0 → 0,8										2 x 9	2 x 6,6			
	VB 20 A RT 544 A1 2V R ≥ 13 m	m/min	13,5 → 27										4 x 7	4 x 5,2			
CEI 38						IEC 38						kVA					
400 V (+6% -10%) 50 Hz												50 LVF : 75kVA					



GB

- Hoisting
- Trolleying
- Slewing
- Travelling



This commercial document is not legally binding.  
For any technical information, please refer to the corresponding instructions.

**Manitowoc**  
Crane CARE

**Manitowoc**  
Crane Group



**Americas**  
Tel : +1 888 479 7278  
Tel : +1 717 593 2000

**Europe - Middle East - Africa**  
Tel : +33 (0) 4 72 81 50 00  
Tel : +44 (0) 191 522 2000

**Asia - Pacific**  
Tel : +65 6264 1188  
Fax : +65 6862 4040

www.manitowoccrane.com

**Manitowoc Crane Group Asia Pte Ltd**  
Manitowoc Crane Group  
4 Kwong Min Road  
Singapore 628707  
Tel: +65 6264 1188  
Fax: +65 6862 4040  
www.manitowoccrane.com

**MC 235 B**  
Réf. 2004 45 MCA 4

Copyright.Reproduction interdite © POTAIN 2004

Réalisation Secdoc