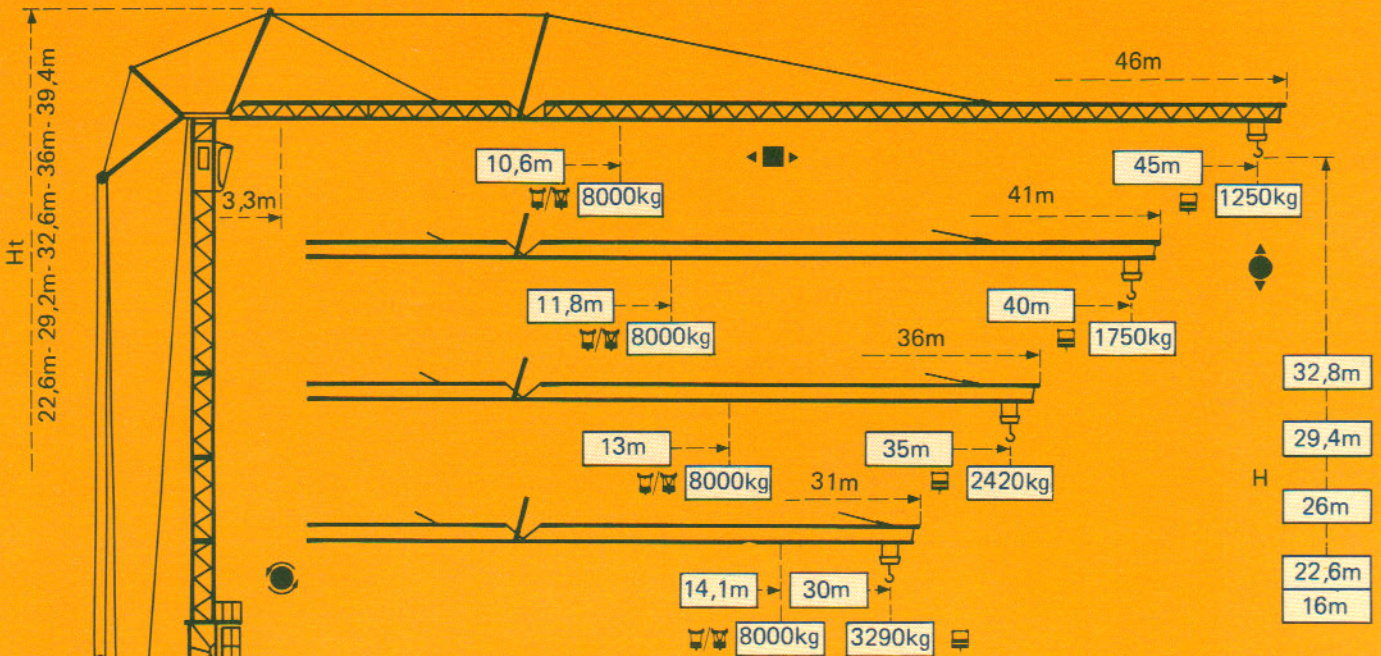


---

**GTMR 360B**

---

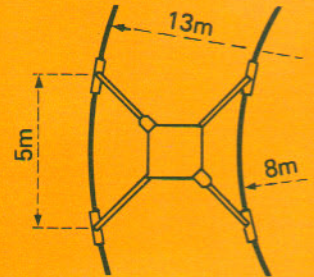
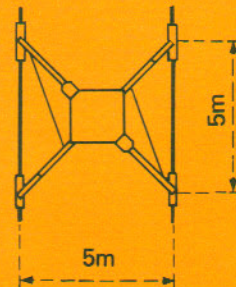
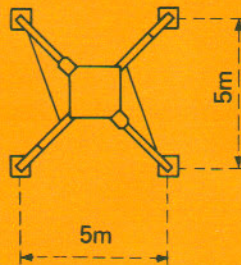
**POTAIN** 




Version sur vérins  
Ausführung auf Abstützspindeln  
Jacks version  
Versión sobre gatos

Version voie droite  
Ausführung gerade Schienenbahn  
Straight track version  
Versión vía recta


Version voie courbe  
Ausführung Kurvengleis  
Curved track version  
Versión vía curva




F1 = Réactions *Eckdrücke* *Reactions* *Reacciones*

F1	● 384 kN	■ 300 kN
	28,6 t	


● En service  
■ Hors service

 A vide sans lest ni train de transport, avec flèche et hauteur maximum.


● In Betrieb  
■ Ausser Betrieb

 Ohne Last, Ballast und Transportachse, mit Maximalausleger und Maximalhöhe.

● In service  
■ Out of service

 Without load, ballast or transport axles, with maximum jib and maximum height.

● En servicio  
■ Fuera de servicio

 Sin carga, sin lastre, ni tren de transporte, flecha y altura maximas.

# Courbes de charges Lastkurven Load diagrams Curvas de cargas



Flèche Ausleger Jib Flecha

3,3 → 10,6	11	13	15	17	19	21	23	25	27	29	31	33	35	37	39	41	43	45	m
8000	7610	6080	5020	4250	3660	3190	2820	2510	2250	2030	1840	1670	1530	1400	1280	1180	1080	1000	kg



45m

3,3 → 18,7	21	23	25	27	29	31	33	35	37	39	41	43	45	m
4000	3450	3070	2760	2500	2280	2090	1920	1780	1650	1530	1430	1340	1250	kg

3,3 → 11,8	13	15	17	19	21	23	25	27	29	31	33	35	37	39	40	m
8000	7030	5820	4940	4270	3740	3310	2960	2660	2410	2190	2000	1840	1690	1560	1500	kg



40m

3,3 → 21	23	25	27	29	31	33	35	37	39	40	m
4000	3570	3210	2920	2660	2450	2260	2090	1940	1810	1750	kg

3,3 → 13	15	17	19	21	23	25	27	29	31	33	35	m
8000	6670	5670	4920	4320	3830	3440	3100	2820	2570	2360	2170	kg



35m

3,3 → 23,4	25	27	29	31	33	35	m
4000	3690	3350	3070	2820	2610	2420	kg

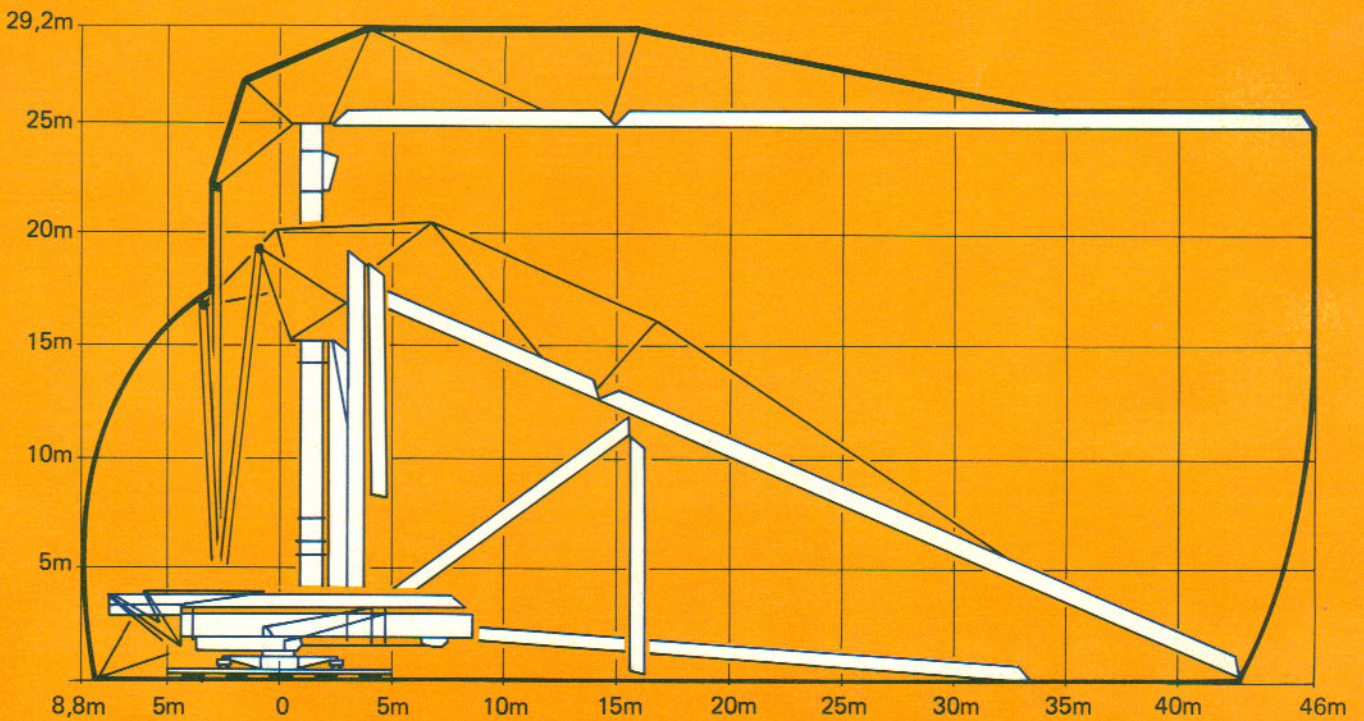
3,3 → 14,1	15	17	19	21	23	25	27	29	30	m
8000	7430	6330	5490	4840	4300	3860	3490	3180	3040	kg















30m

3,3 → 25,6	27	29	30	m
4000	3750	3430	3290	kg

## Montage Montage Erection Montaje



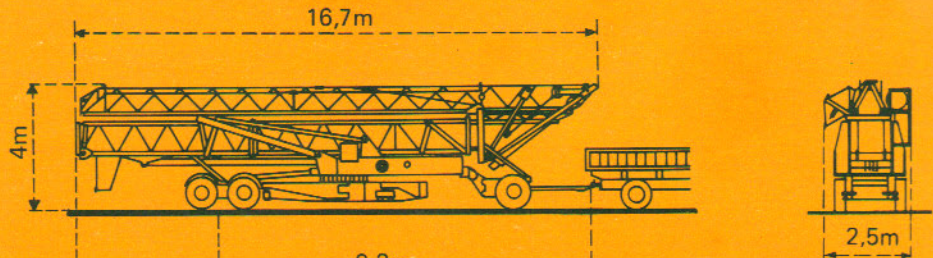
Mécanismes Antriebe Mechanisms Mecanismos

				m/min.	kg	ch-PS hp	kW
Levage Heben Hoisting Elevación	 33 PC 20			5,4	4000	5,5	4
				30	4000	33	24
				60	2000		
				2,7	8000	5,5	4
				15	8000	33	24
				30	4000		
Distribution - Katzfahren Trolleying - Distribución		RCC 52	15 30 45		6,5	4,8	
Orientation - Schwenken Slewing - Orientación		OMD 32	0,1-0,4-0,8 tr/mn U/min-rpm		8	6	
Translation - Kranfahren Travelling - Traslación		Standard	25		2 x 4	2 x 3	
Réseau - Netzstrom - Mains supply - Red						380V - 50 HZ	
Puissance électrique nécessaire - Anschlusswert - Necessary electric power - Potencia electrica necesaria						50 KVA	
Groupe électrogène - Stromaggregat - Generator set - Grupo electrogeno						*	

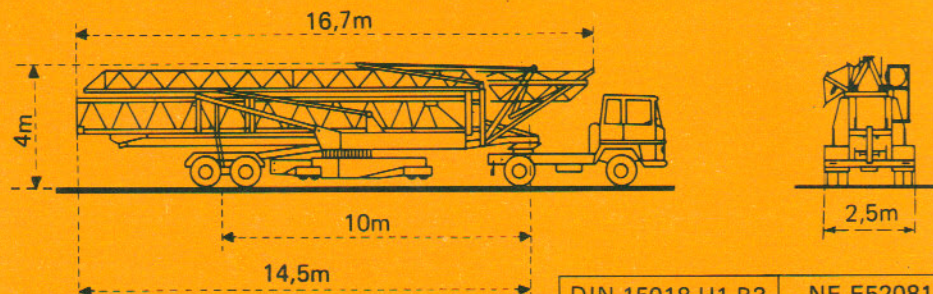
\*Nous consulter - Auf Anfrage - Consult us - Consultarnos

Transport Transporte Transporte Transporte

Version tractée derrière  
 camion  
 Ausführung als LKW-Anhänger  
 Lorry towed version  
 Versión remolcable detrás  
 de un camión



Version semi-portée  
 Ausführung als Sattelaufleger  
 Tractor towed version  
 Versión en semi-remolque



DIN 15018 H1 B3 NF E52081 - 82

**POTAIN** 

18, rue de Charbonnières B.P. 173-F 69132 ECULLY Cedex  
 Tél. 78.33.81.81 — Télex 330 179 Télex Export 375 213

POTAIN GmbH 6082 MÖRFELDEN WALLDORF  
 Nordendstr. 79-87 - Postfach 420  
 Tél. 06 105 704.0 - Télex 4.1857 45

**GTMR 360 B**

Ref. 8443 KMJ 3

Modifications réservées - Änderungen vorbehalten - Subject to modification - Modificaciones reservadas  
 Printed in France