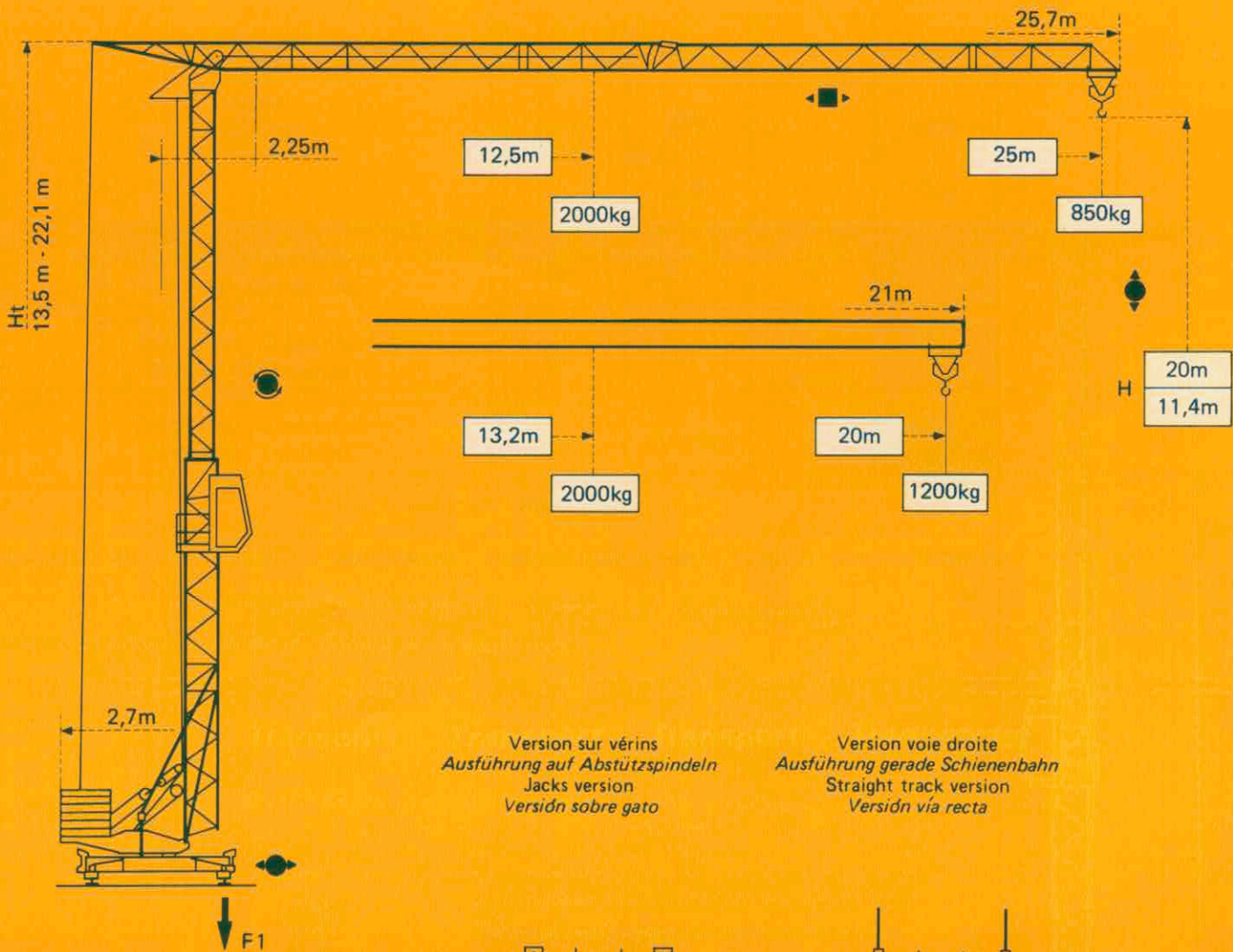


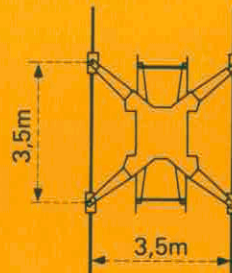
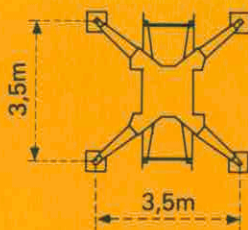
GMR 321 B

POTAIN 



Version sur vérins
Ausführung auf Abstützspindeln
Jacks version
Versión sobre gato


Version voie droite
Ausführung gerade Schienenbahn
Straight track version
Versión vía recta




F1 = Réactions Eckdrücke Reactions Reacciones

| | | |
|---|-------|--------|
| F1 | ● 12t | ■ 7,5t |
|  | 8,8t | |


- En service
- Hors service

 A vide sans lest ni train de transport, avec flèche et hauteur maximum.


- In Betrieb
- Ausser Betrieb

 Ohne Last, Ballast und Transportachse, mit Maximalausleger und Maximalhöhe.

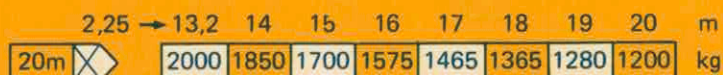
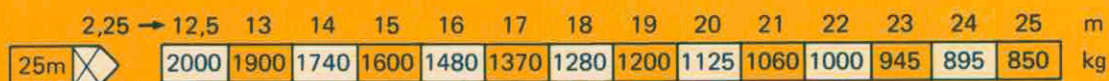
- In service
- Out of service

 Without load, ballast or transport axles, with maximum jib and maximum height.

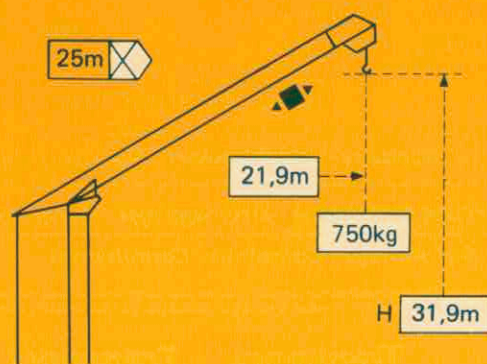
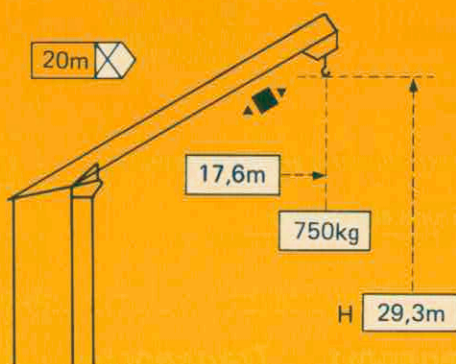
- En servicio
- Fuera de servicio

 Sin carga, sin lastre, ni tren de transporte, flecha y altura maximas.

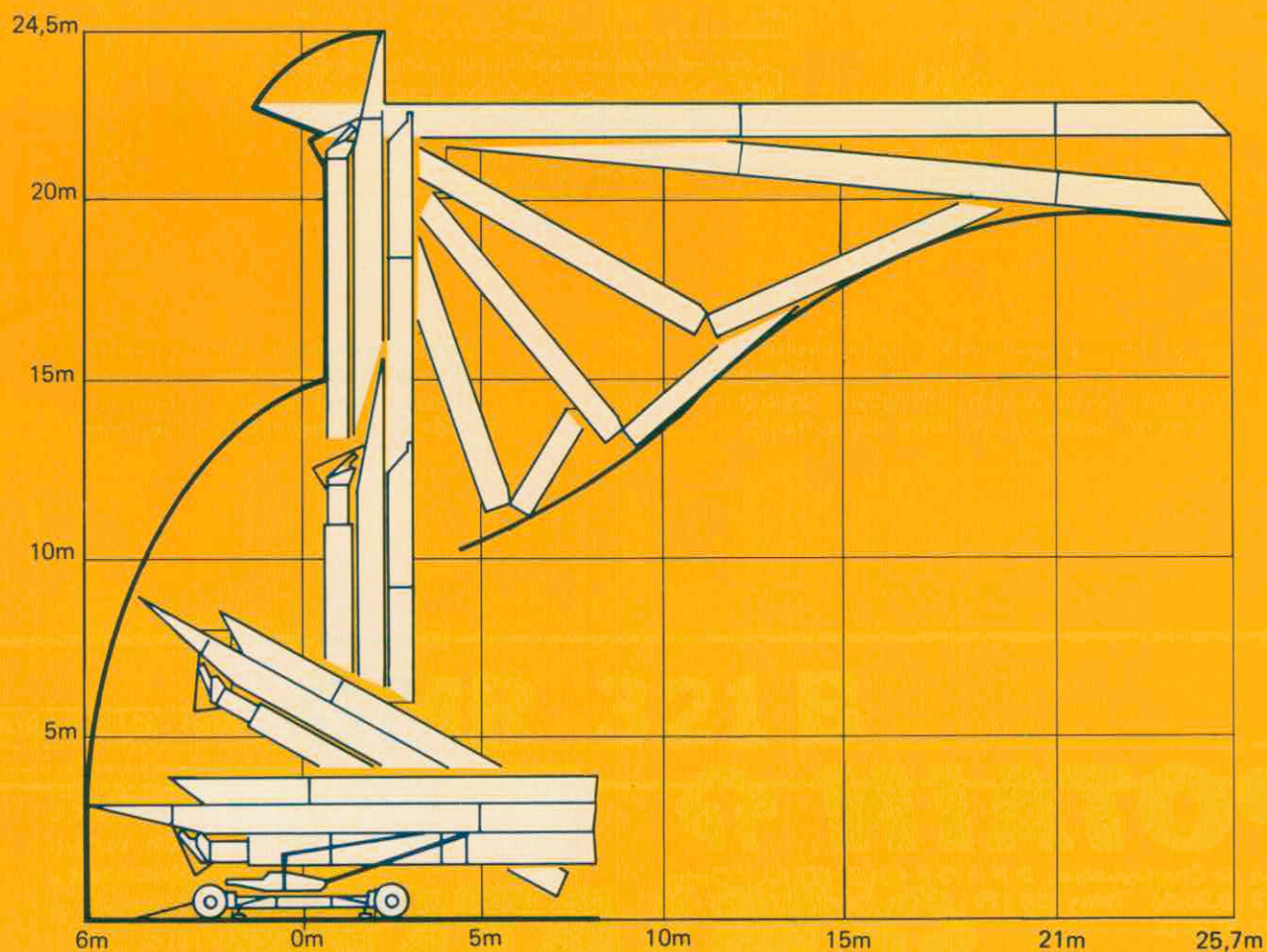
Courbes de charges *Lastkurven* Load diagrams *Curvas de cargas*



Flèche relevée *Ausleger in Steilstellung* Luffing jib *Flecha izada*
 Chariot distributeur *Verfahrbare Laufkatze* Traversing trolley *Carro distribuidor*



Montage *Montage* Erection *Montaje*

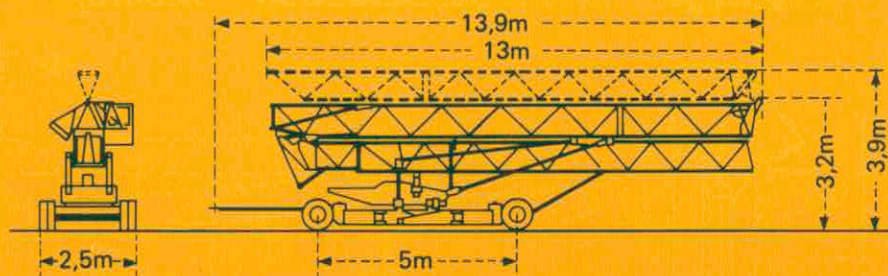


Mécanismes Antriebe Mechanisms Mecanismos

| | | | m/min. | kg | ch-PS hp | kW |
|---|----------------|----------|-------------------------------|------|--------------|-------|
| Levage Heben Hoisting Elevación | 15 TD PC 10 | | 8 | 2000 | 5 | 3,7 |
| | | | 25 | 2000 | 15 | 11 |
| | | | 50 | 1000 | | |
| Distribution - Katzfahren Trolleying - Distribución | | 2 D1 V2 | 35 | | 4 | 3 |
| Orientation - Schwenken Slewing - Orientación | | RCO 10 | 0,16-1 tr/min U/min-rpm | | 2 | 1,5 |
| Translation - Kranfahren Travelling - Traslación | | Standard | 25 | | 2 x 1,4 | 2 x 1 |
| Réseau - Netzstrom - Mains supply - Red | | | | | 380V - 50 HZ | |
| Puissance électrique nécessaire - Anschlusswert - Necessary electric power - Potencia electrica necesaria | | | | | 20 KVA | |
| Groupe électrogène - Stromaggregat - Generator set - Grupo electrogeno | | | | | * | |

*Nous consulter - Auf Anfrage - Consult us - Consultarnos

Transport Transport Transport Transporte



Version transport lestée : Nous consulter
Transport mit Ballast, bitte bei uns rückfragen
Road transported version with ballast : Consult us
Versión transporte con lastre : Consultarnos

Version semi-portée : Nous consulter
Ausführung als Sattelaufleger : Auf Anfrage
Tractor towed version : Consult us
Versión en semi-remolque : Consultarnos

NF E 52081 - 82 DIN 15018 H1 B3

POTAIN

18, rue de Charbonnières, B.P. 173-F 69132 ECULLY Cedex
Tél. 72.20.20.20 - Télex 330 179 - Télex. Export 375 213 -
Fax 72 20 20 00

POTAIN GmbH 6082 MÖRFELDEN WALLDORF
Nordendstr. 79-87 - Postfach 420
Tél. 06 105 704.0 - Télex 4.1857 45

KÖHLER u. LUDWIG
Baumaschinen- und Geräte-Vertrieb
Grauelsbaum, Industriestraße 6a
7585 LICHTENAU 4
Telefon 07227/31 81

GMR 321 B

Réf. 1986.51 KRV 2

Modifications réservées - Änderungen vorbehalten - Subject to modification - Modificaciones reservadas

Printed in France