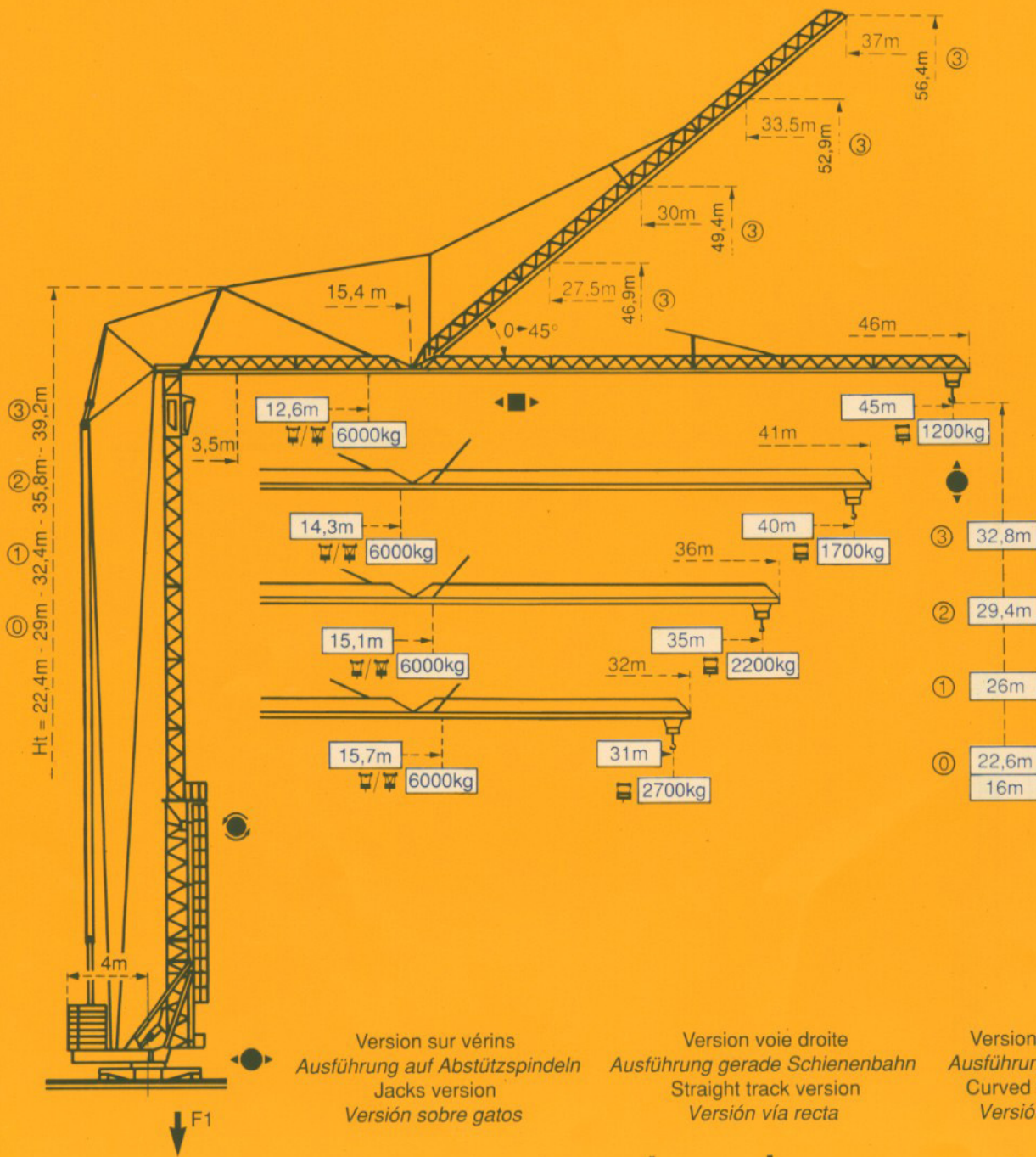


GTMR 356 A

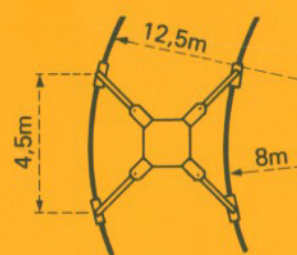
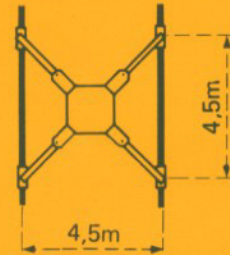
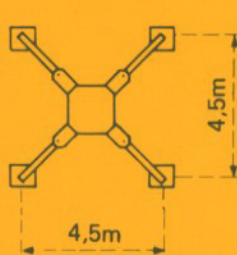
POTAIN 



Version sur vérins
Ausführung auf Abstützspindeln
Jacks version
Versión sobre gatos

Version voie droite
Ausführung gerade Schienenbahn
Straight track version
Versión vía recta

Version voie courbe
Ausführung Kurvengleis
Curved track version
Versión vía curva



F1 = Réactions Eckdrücke Reactions Reacciones

F1	● 36t	■ 34t
	26,5t	

- En service
- Hors service

- In Betrieb
- Ausser Betrieb

- In service
- Out of service

- En servicio
- Fuera de servicio

A vide sans lest ni train de transport, avec flèche et hauteur maximum.

Ohne Last, Ballast und Transportachse, mit Maximalausleger und Maximalhöhe.

Without load, ballast or transport axles, with maximum jib and maximum height.

Sin cargas, sin lastre, ni tren de transporte, flecha y altura máximas.

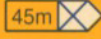

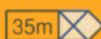
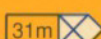
Courbes de charges

Lastkurven

Load diagrams

Curvas de cargas

 Flèche Ausleger Jib Flecha

3,5 →	12,6	15	17	20	22	25	27	30	32	35	37	40	42	45	m						
⊠/⊠	6000	4780	4050	3270	2880	2420	2170	1870	1710	1490	1370	1210	1120	1000	kg						
																					
3,5 →	22,4	25	27	30	32	35	37	40	42	45	m										
⊠											3000	2620	2370	2070	1910	1690	1570	1410	1320	1200	kg
3,5 →	14,3	15	17	20	22	25	27	30	32	35	37	40				m					
⊠/⊠	6000	5620	4780	3870	3420	2890	2610	2260	2070	1820	1680	1500				kg					
																					
3,5 →	25,6	27	30	32	35	37	40					m									
⊠											3000	2810	2460	2270	2020	1880	1700				kg
3,5 →	15,1	17	20	22	25	27	30	32	35						m						
⊠/⊠	6000	5170	4200	3710	3150	2840	2470	2260	2000						kg						
																					
3,5 →	27,3	30	32	35						m											
⊠											3000	2670	2460	2200				kg			
3,5 →	15,7	17	20	22	25	27	30	31						m							
⊠/⊠	6000	5440	4420	3910	3320	3000	2610	2500						kg							
																					
3,5 →	28,5	30	31						m												
⊠											3000	2810	2700				kg				

Flèche relevée

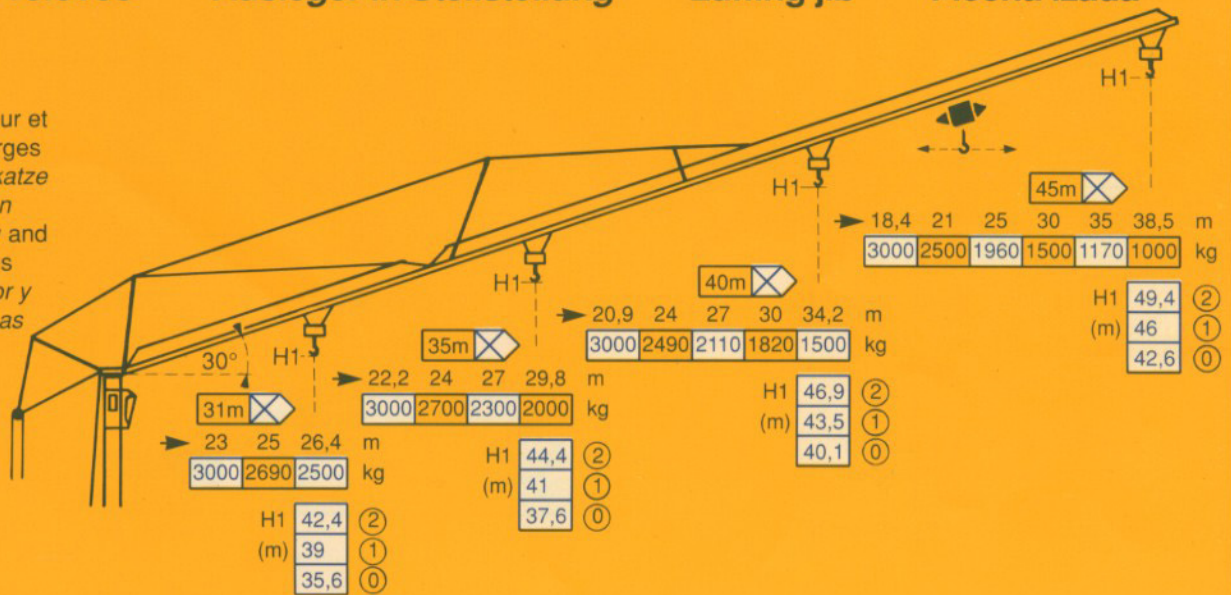
Ausleger in Steilstellung

Luffing jib

Flecha izada

 4 D3 V3

Chariot distributeur et
 Courbes de charges
 Verfahrbare Laufkatze
 und Lastkurven
 Traversing trolley and
 Load diagrams
 Carro distribuidor y
 Curvas de cargas

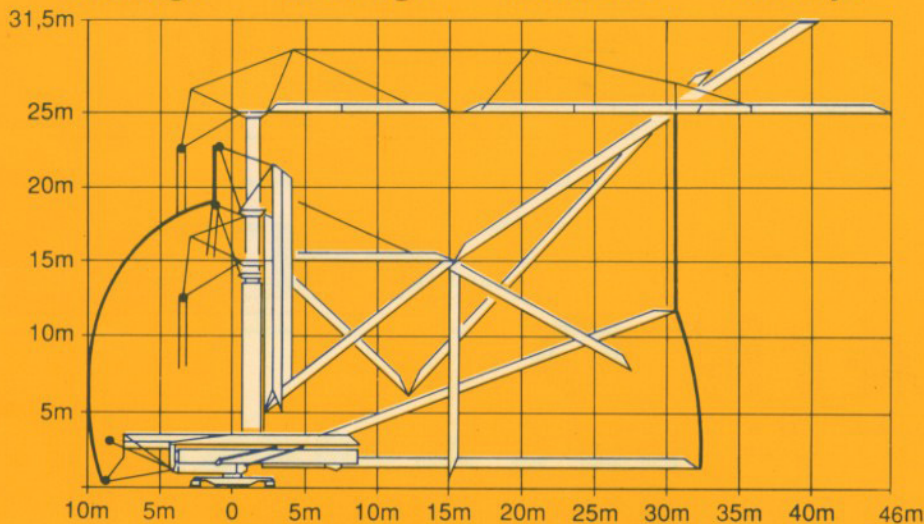


Montage

Montage

Erection

Montaje


















Mécanisme

Antriebe

Mechanisms

Mecanismos

				m/min	kg	ch-PS hp	kW
Levage Heben Hoisting Elevación	25 PC 15 			5,4	3000	4,5	3,3
				30	3000		
				60	1500		
				2,7	6000	4,5	3,3
				15	6000		
				30	3000	25	18,4
Distribution - <i>Katzfahren</i> Trolleying - <i>Distribución</i>		4 D3 V3	15-30-58		4	3	
Orientation - <i>Schwenken</i> Slewing - <i>Orientación</i>		RCV 61	0 → 0,8 tr/min U/min-rpm		8	5,9	
Translation - <i>Kranfahren</i> Travelling - <i>Traslación</i>		Standard	25		2 x 4	2 x 3	
Réseau - <i>Netzstrom</i> - Mains supply - <i>Red</i>						380V - 50HZ	
Puissance électrique nécessaire - <i>Anschlusswert</i> - Necessary electric power - <i>Potencia electrica necesaria</i>						40 KVA	
Groupe électrogène - <i>Stromaggregat</i> - Generator set - <i>Grupo electrogeno</i>						*	

* Nous consulter - *Auf Anfrage* - Consult us - *Consultanos*

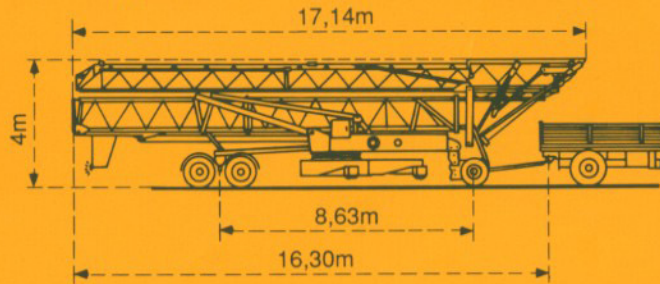
Transport

Transport

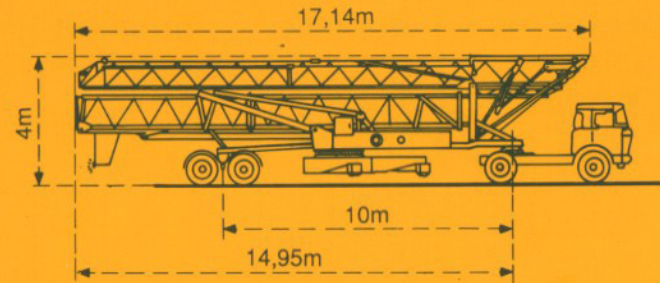
Transport

Transporte

Version tractée derrière camion
Ausführung als LKW-Anhänger
 Lorry towed version
Versión remolcable detrás de un camion



Version semi-portée
Ausführung als Sattelaufleger
 Tractor towed version
Versión en semi-remolque



Conforme à la directive CEE 84/534 sur le niveau acoustique - *Gemäss EWG-Richtlinie 84/534 über Schall-Leistungspegel*
 In compliance with the EEC 84/534 Instruction on noise level - *Conforme con la directiva CEE 84/534 sobre el nivel acustico*

DIN 15018 H1 B3

NF E52081 - 82

POTAIN 

18, rue de Charbonnières, B.P. 173-F 69132 ECULLY Cedex
 Tél. 72.20.20.20 - Télex 330 179 - Télex. Export 375 213 -
 Fax 72 20 20 00

POTAIN GmbH 6082 MÖRFELDEN WALLDORF
 Nordendstr. 79-87 - Postfach 420
 Tél. 06 105 704.0 - Télex 4.1857 45

GTMR 356 A

Réf. 1990.01 LAF 2

Modifications réservées - *Anderungen vorbehalten* - Subject to modification - *Modificaciones reservadas*

Printed in France