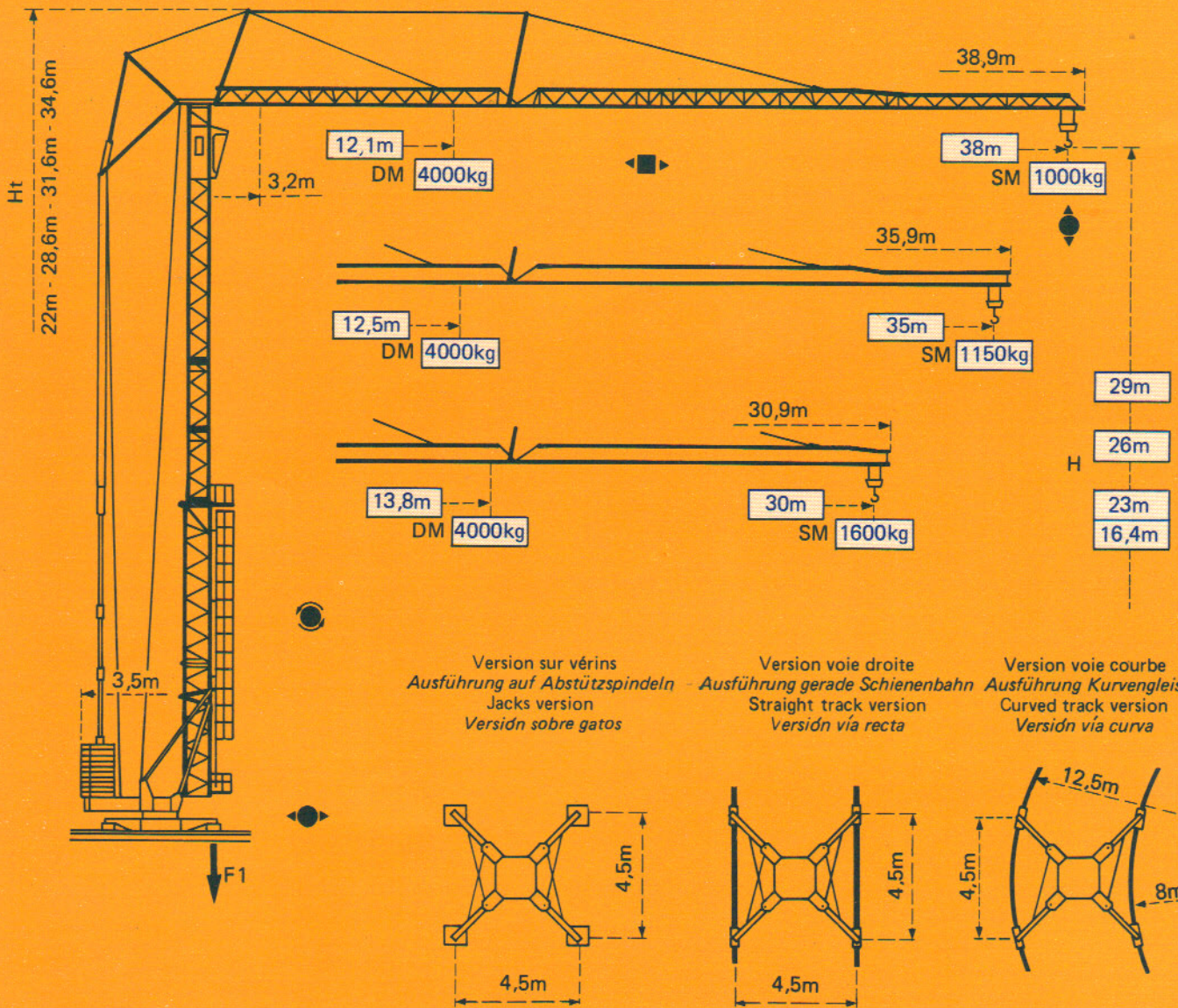


---

**GTMR 334C**

**POTAIN** 



F1 = Réactions Eckdrücke Reactions Reacciones

F1	● 222 kN	■ 191 kN
	17,1 t	

- En service
- Hors service

A vide sans lest ni train de transport, avec flèche et hauteur maximum.

- In Betrieb
- Ausser Betrieb

Ohne Last, Ballast und Transportachse, mit Maximalausleger und Maximalhöhe.

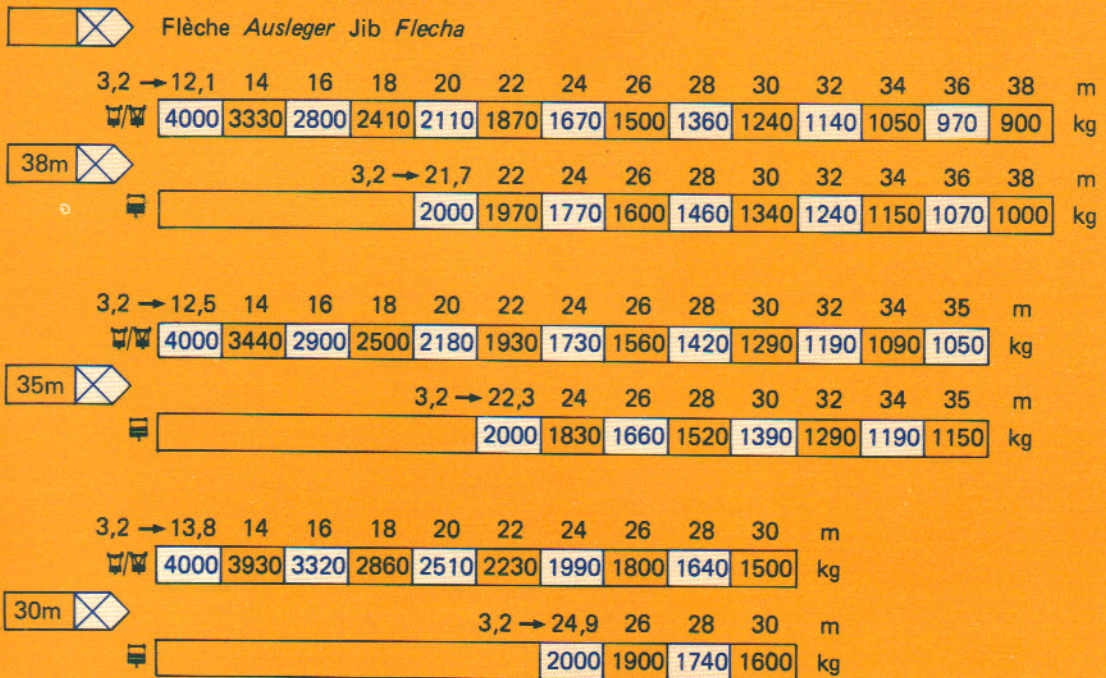
- In service
- Out of service

Without load, ballast or transport axles, with maximum jib and maximum height.

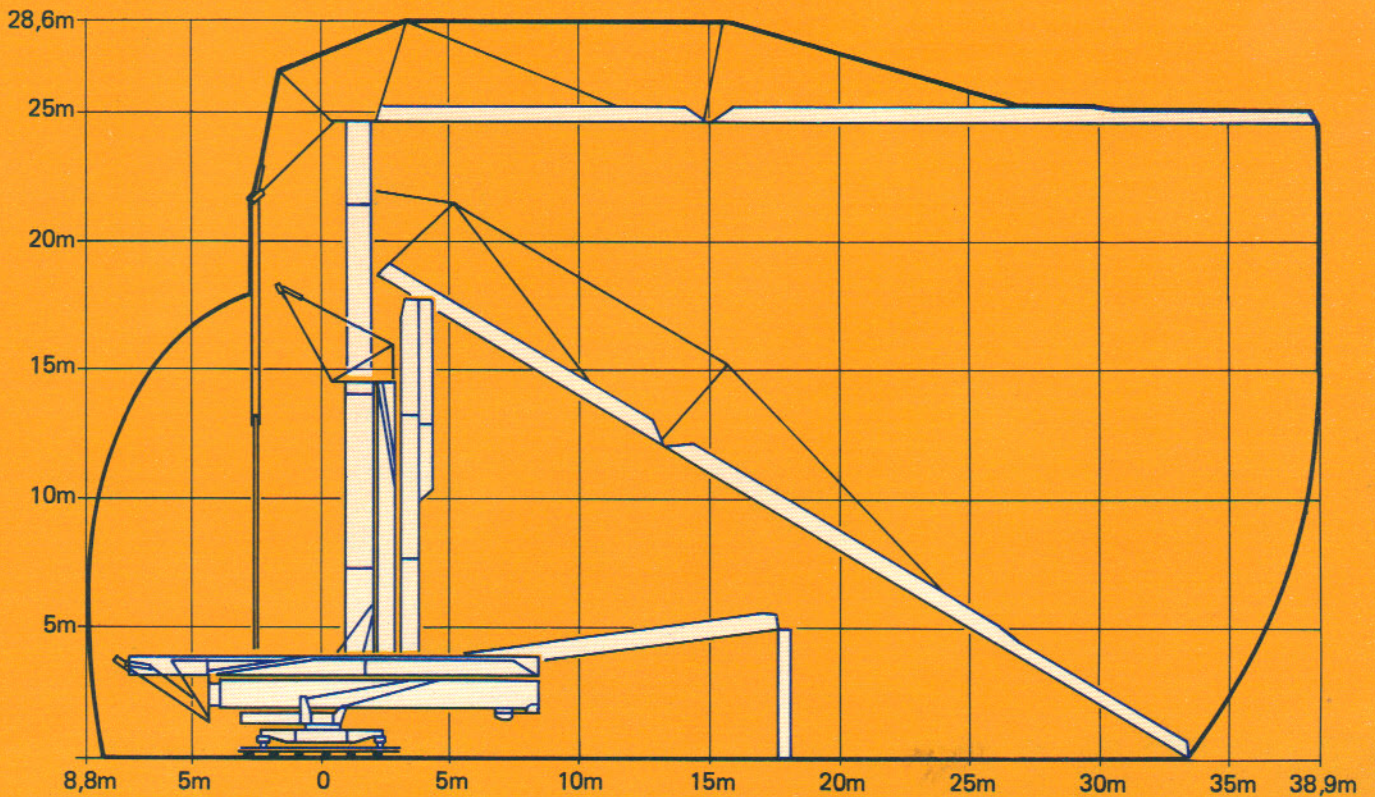
- En servicio
- Fuera de servicio

Sin carga, sin lastre, ni tren de transporte, flecha y altura maximas.

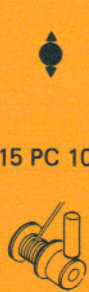















# Courbes de charges Lastkurven Load curves Curvas de cargas



## Montage Montage Erection Montaje

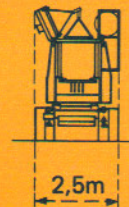
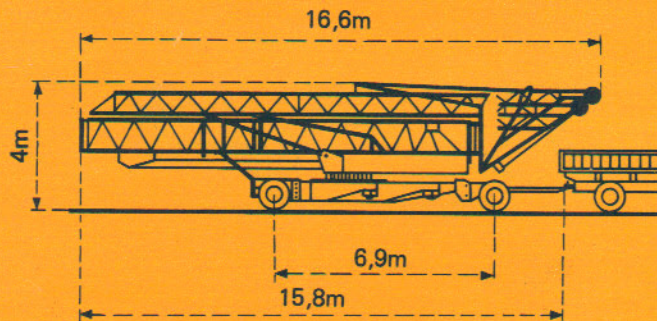


Mécanismes    Antriebe    Mechanisms    Mecanismos

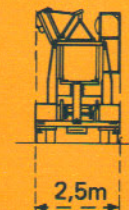
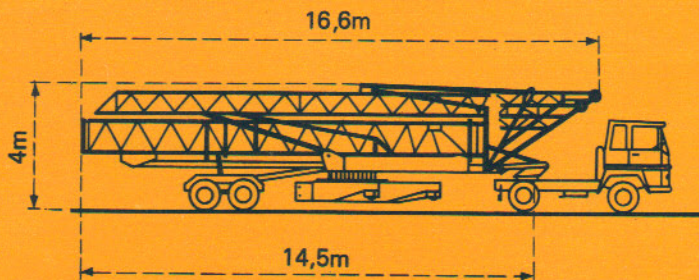
				m/min.	kg	ch-PS hp	kW
Levage Heben Hoisting Elevación	 15 PC 10			6	2000	3,5	2,5
				25	2000		
				50	1000		
				3	4000	3,5	2,5
				12,5	4000		
				25	2000		
Distribution - Katzfahren Trolleying - Distribución		2D1V2	31,8		4	3	
		2D2V2	14-42		3	2,2	
Orientation - Schwenken Slewing - Orientación		RCO 50	0,15-0,5-1 tr/min U/min-rpm		5	3,7	
Translation - Kranfahren Travelling - Traslación		TVD 122	25			2 x 2	2 x 1,5
		TB 122					
Puissance électrique nécessaire Anschlusswert Necessary electric power Potencia eléctrica necesaria	380 V 50 HZ 	Réseau - Netzstrom - Mains supply - Red			20 kVA		
		Groupe électrogène - Stromaggregat Generator set - Grupo electrógeno			Nous consulter Auf Anfrage Consult us Consultarnos		

Transport    Transport    Transport    Transporte

Version tractée derrière  
camion  
Ausführung als LKW-Anhänger  
Lorry towed version  
Versión remolcable detrás  
de un camión



Version semi-portée  
Ausführung als Sattelaufleger  
Tractor towed version  
Versión en semi-remolque



DIN 15018 H1 B3

**POTAIN** 

18, rue de Charbonnières B.P 173 - F 69130 ECULLY  
Tél. (7) 833.81.81 - Télex 330 179  
EXPORT 207, rue de Bercy - Tour MATTEI - 75012 PARIS  
Tél. (1) 347.30.77 - Télex 215 483  
POTAIN GmbH - D 6082 MÖRFELDEN - WALLDORF  
Nordendstr. 79-87 - Postfach 420 - Tel. (6 105) 5091 - Telex 4 185745  
POTAIN SUISSE S.A. - CH 5115 MÖRIKEN WILDEGG  
Tel. 64.53.19.91 - Telex 68294

Réf. 8152 HCP 2

Modificaciones reservadas    Änderungen vorbehalten    Subject to modification

Printed in France