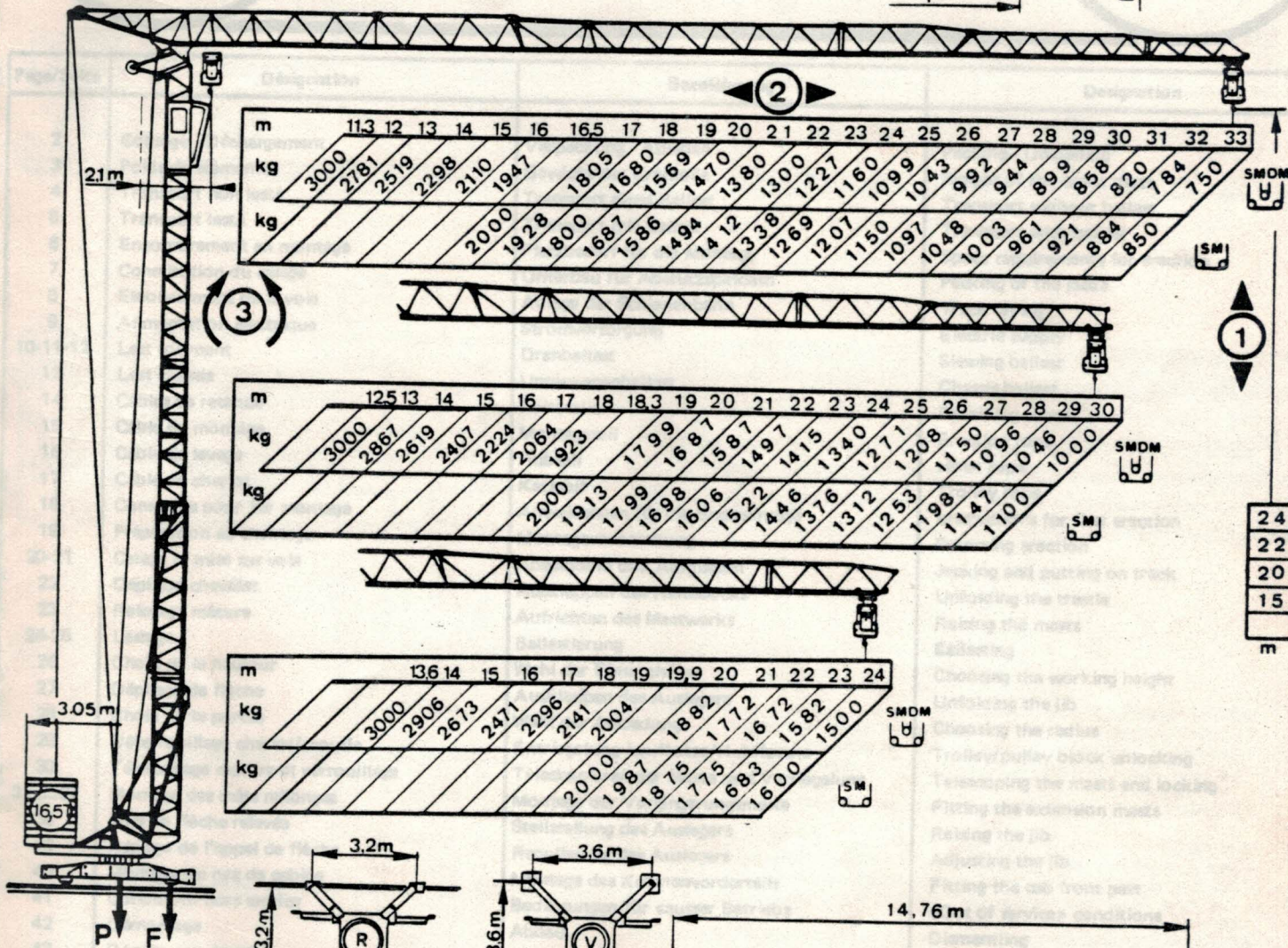
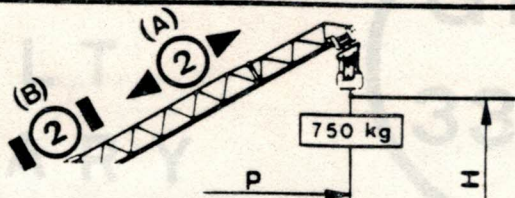


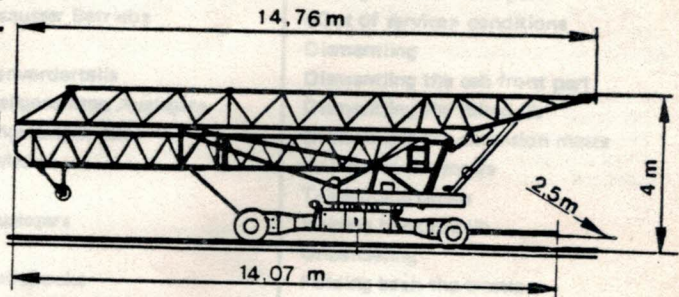
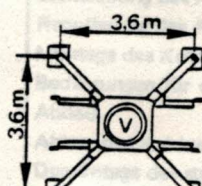
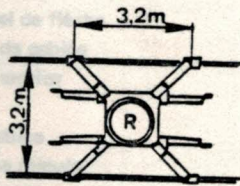
	24 m	30 m	33 m
P=	20.8m	26 m	28.6m
24 m	H= 34.9m	37.9m	39.4m
22 m	H= 32.9m	35.9m	37.4 m
20 m	H= 30.9m	33.9m	35.4 m



m	11.3	12	13	14	15	16	16.5	17	18	19	20	21	22	23	24	25	26	27	28	29	30	31	32	33
kg	3000	2781	2519	2298	2110	1947	1805	1680	1569	1470	1380	1300	1227	1160	1099	1043	992	944	899	858	820	784	750	
kg	2000	1928	1800	1687	1586	1494	1412	1338	1269	1207	1150	1097	1048	1003	961	921	884	850	820	784	750			

m	12.5	13	14	15	16	17	18	18.3	19	20	21	22	23	24	25	26	27	28	29	30
kg	3000	2887	2619	2407	2224	2064	1923	1799	1687	1587	1497	1415	1340	1271	1208	1150	1096	1046	1000	
kg	2000	1913	1799	1698	1606	1522	1446	1376	1312	1253	1198	1147	1100	1046						

m	13.6	14	15	16	17	18	19	19.9	20	21	22	23	24
kg	3000	2906	2673	2471	2296	2141	2004	1882	1772	1672	1582	1500	
kg	2000	1987	1875	1775	1683	1600	1500						



P=13600 kg
 SANS LEST SANS TRAIN
 OHNE BALLAST OHNE TRANSPORTACHSE
 WITHOUT BALLAST WITHOUT TOWING AXLE
 SIN LASTRE SIN TREN

F_V=16860 daN EN SERVICE IN SERVICE
 F_R=19500 daN IN BETRIEB EN SERVICIO
 F_V=12700 daN HORS SERVICE OUT OF SERVICE
 F_R=14050 daN AUSSER BETRIEB FUERA DE SERVICIO

50Hz	60Hz	m/mn	kg	kW	m/mn	kg	kW	(A)=2D1V2	35 m/mn	3 kW		
15 TDPC 10			4,2	3000	3,7	8,4	2000	3,7		42 m/mn	3,6 kW	
			5	1500	4,4	10	2000	4,4		14 - 42 m/mn	2,2 kW	
				8,4	3000	3,7	25	2000	11		16.6 - 50 m/mn	2,6 kW
				10	1500	4,4	30	2000	13,2		0,16 - 0,5 - 1 tr/mn	2,2 kW
			12,5	3000	11	50	1000	11		25 m/mn	2x1,5 kW	
			15	1500	13,2	60	1000	13,2		30 m/mn	2x1,8 kW	
				25	2000	11	50	1000	11		380V - 50Hz = 20KVA	
				30	1000	13,2	60	1000	13,2		450V 60Hz = 24 KVA	