















 <ul style="list-style-type: none"> <li>•in bedrijf</li> <li>•en service</li> <li>•in service</li> <li>•in Betrieb</li> <li>•in servizio</li> <li>•en servicio</li> </ul>	 <ul style="list-style-type: none"> <li>•buiten bedrijf</li> <li>•hors service</li> <li>•out of service</li> <li>•außer Betrieb</li> <li>•fuori servizio</li> <li>•fuera de servicio</li> </ul>	 <ul style="list-style-type: none"> <li>•hijsen</li> <li>•levage</li> <li>•hoisting</li> <li>•heben</li> <li>•sollevamento</li> <li>•elevación</li> </ul>	 <ul style="list-style-type: none"> <li>•loopkatrijden</li> <li>•chariotage</li> <li>•jib trolleying</li> <li>•Katzfahren</li> <li>•traslazione carrello</li> <li>•poleas móviles</li> </ul>	 <ul style="list-style-type: none"> <li>•zwenken</li> <li>•orientation</li> <li>•slewing</li> <li>•Schwenken</li> <li>•rotazione</li> <li>•orientación</li> </ul>	 <ul style="list-style-type: none"> <li>•spanning</li> <li>•tension</li> <li>•voltage</li> <li>•spannung</li> <li>•tensione</li> <li>•tensión</li> </ul>	 <ul style="list-style-type: none"> <li>•gewicht zonder ballast</li> <li>•poids propre sans lest</li> <li>•weight without ballast</li> <li>•gewicht ohne Ballast</li> <li>•peso senza zavorra</li> <li>•peso sin lastre</li> </ul>
 <ul style="list-style-type: none"> <li>•lengte</li> <li>•longueur</li> <li>•length</li> <li>•länge</li> <li>•lunghezza</li> <li>•longitud</li> </ul>	 <ul style="list-style-type: none"> <li>•spoor</li> <li>•translation</li> <li>•rail</li> <li>•Kranfahren</li> <li>•carreggiata</li> <li>•rail</li> </ul>	 <ul style="list-style-type: none"> <li>•vermogen</li> <li>•puissance</li> <li>•power</li> <li>•leistung</li> <li>•potenza</li> <li>•potencia</li> </ul>	 <ul style="list-style-type: none"> <li>•micro snelheid</li> <li>•vitesse</li> <li>•speed</li> <li>•Geschwindigkeit</li> <li>•velocità</li> <li>•velocidad</li> </ul>	 <ul style="list-style-type: none"> <li>•2<sup>o</sup> snelheid</li> <li>•2<sup>e</sup> vitesse</li> <li>•2<sup>o</sup> speed</li> <li>•2<sup>o</sup> Geschwindigkeit</li> <li>•2<sup>a</sup> velocità</li> <li>•2<sup>o</sup> velocidad</li> </ul>	 <ul style="list-style-type: none"> <li>•3<sup>o</sup> snelheid</li> <li>•3<sup>e</sup> vitesse</li> <li>•3<sup>o</sup> speed</li> <li>•3<sup>o</sup> Geschwindigkeit</li> <li>•3<sup>a</sup> velocità</li> <li>•3<sup>o</sup> velocidad</li> </ul>	 <ul style="list-style-type: none"> <li>•maximale hoekdruk</li> <li>•réactions</li> <li>•reactions</li> <li>•Eckdrücke : 10 kN = 1t</li> <li>•press. angolare massima</li> <li>•presión angular máxima</li> </ul>
 <ul style="list-style-type: none"> <li>•enkel inschering zonder hijsblok</li> <li>•simple mouflage sans moufle</li> <li>•2 fall reeving without houstingblock</li> <li>•2 Fach Einscherung ohne Hakenflasche</li> <li>•passaggio semplice senza paranca</li> <li>•solamente elevación sin polea</li> </ul>	 <ul style="list-style-type: none"> <li>•enkel inschering met hijsblok</li> <li>•simple mouflage avec moufle</li> <li>•2 fall reeving with houstingblock</li> <li>•2 Fach Einscherung mit Hakenflasche</li> <li>•passaggio semplice con paranca</li> <li>•solamente elevación con polea</li> </ul>	 <ul style="list-style-type: none"> <li>•dubbel inschering</li> <li>•double mouflage</li> <li>•4 fall reeving</li> <li>•4 Fach Einscherung</li> <li>•passaggio doppio</li> <li>•elevación doble</li> </ul>				

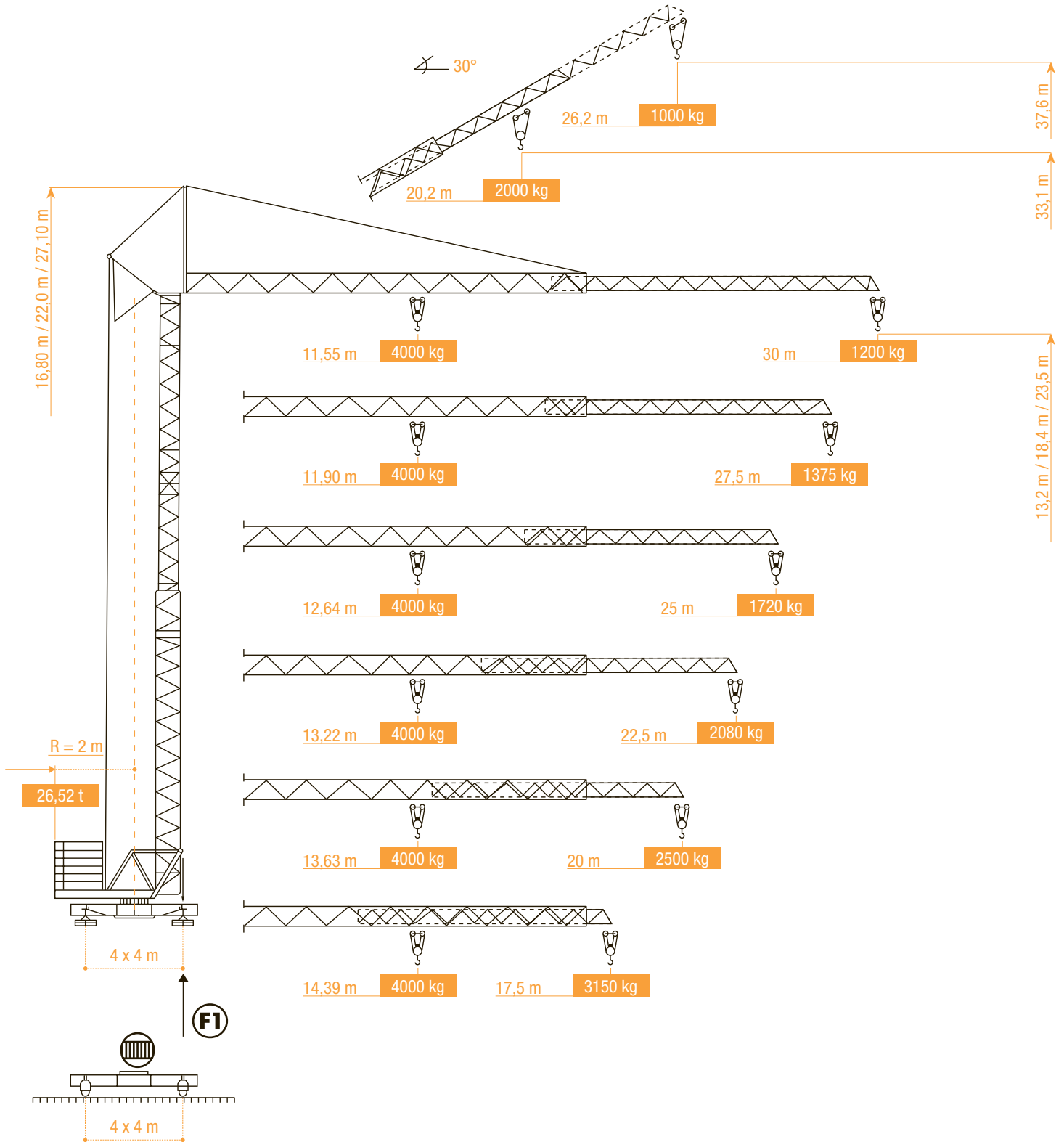
Konform richtlijn 2000/14/EG betreffende geluidsemissie van materieel voor gebruik buitenshuis en wijzigingen. - également conforme aux dispositions de la directive "émission sonores des équipements utilisés à l'extérieur des bâtiments" 2000/14/CE et aux législations la transposant. - Requirements of directive 2000/14/CE "noise emission in the environment by equipment for use outdoors, as amended. - Bestimmung der Richtlinie "Lärmübertragung des ausserhalb der Gebäude benutzten Ausrüstungen" 2000/14/EG und den gesetzlichen Vorschriften.



**ARCOMET**

Industrieweg 139 - 3583 Paal-Beringen - BELGIUM - T +32 (0)11 450 950 - EMAIL [arcomet@arcomet.com](mailto:arcomet@arcomet.com) - [www.arcomet.com](http://www.arcomet.com)

# T 33 Eco city



**ARCOMET**  
 www.arcomet.com



LASTENTABEL - COURBES DE CHARGES - LOAD CURVES - LASTKURVEN - CURVE DI CARICO - CURVAS DE CARGAS

m	11,55	14	16	17	18	19	20	21	22	23	24	25	26	27	28	29	30
kg	4000	3157	2655	2466	2293	2148	2010	1896	1784	1691	1598	1521	1444	1377	1312	1255	1200

m	11,9	15	16	17	18	19	20	21	22	23	24	25	26	27,5
kg	4000	2938	2758	2517	2383	2193	2090	1936	1856	1727	1664	1554	1504	1375

m	12,60	16	17	18	19	20	21	22	23	24	25
kg	4000	2987	2769	2583	2417	2269	2136	2016	1909	1810	1720

m	13,2	16	17	18	19	20	21	22	22,5
kg	4000	3160	2930	2735	2559	2404	2264	2200	2080

m	13,6	16	18	19	20
kg	4000	3284	2843	2660	2500

m	14,3	17,5
kg	4000	3150



m	20,9	27	28	29	30
kg	2000	1457	1412	1354	1300

HOEKDRUKKEN - RÉACTIONS - REACTIONS - ECKDRÜCKE - REAZIONI - REACCIONES

**F1**

225

**F1**

175

**kg**

15 500

AANDRIJVINGEN - MÉCHANISMES - MECHANISMS - ANTRIEBE - MECCANISMI - MECANISMOS

max. 2000 kg

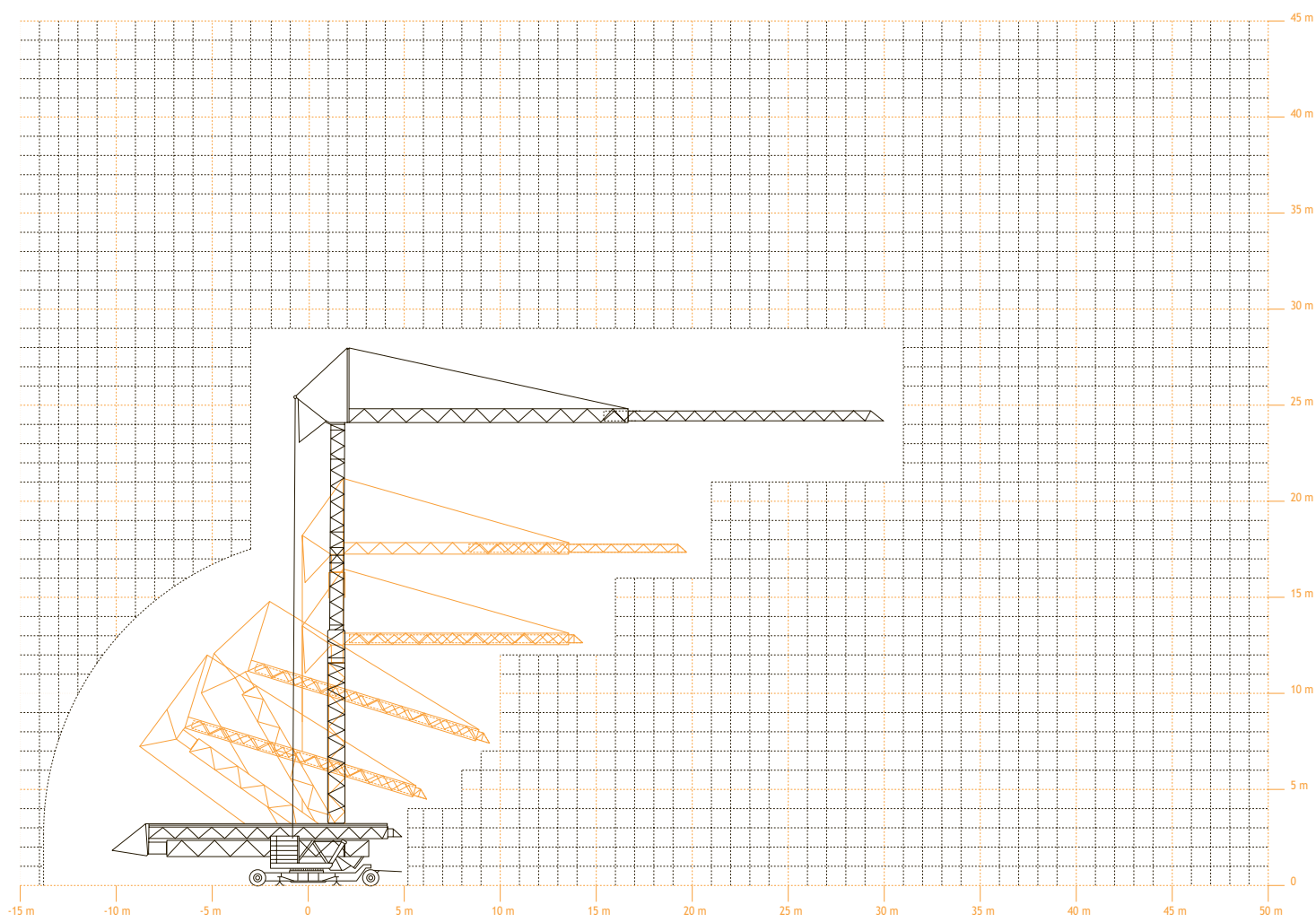
max. 4000 kg

	m/min	0 → 22	0 → 26	0 → 44	0 → 11	0 → 13	0 → 22
	kg	2000	1500	1000	4000	3000	2000
	kW	11,0	11,0	11,0	11,0	11,0	11,0
	m/min	0 → 60		1,5 kW	0 → 60		1,5 kW
	tr/min	0 - 1		2,2 kW	0 - 1		2,2 kW
	kVA	max 25 kVA			35 kVA		
	V	400 V / 50 Hz / 32 A					

Opm: mogelijkheid tot werken met gereduceerde snelheid bij 25A  
 Rem: commande sous 25A possible a vitesse reduite

Note: operation with 25A only possible at reduced speed  
 Bem: Bedienung mit 25A nur mit reduzierter Geschwindigkeit

VEREISTE MONTAGERUIMTE - ENCOMBREMENT AU MONTAGE - SPACE REQUIREMENT - ABMESSUNGEN - SPAZIO NECESSARIO PER IL MONTAGGIO



TRANSPORT

