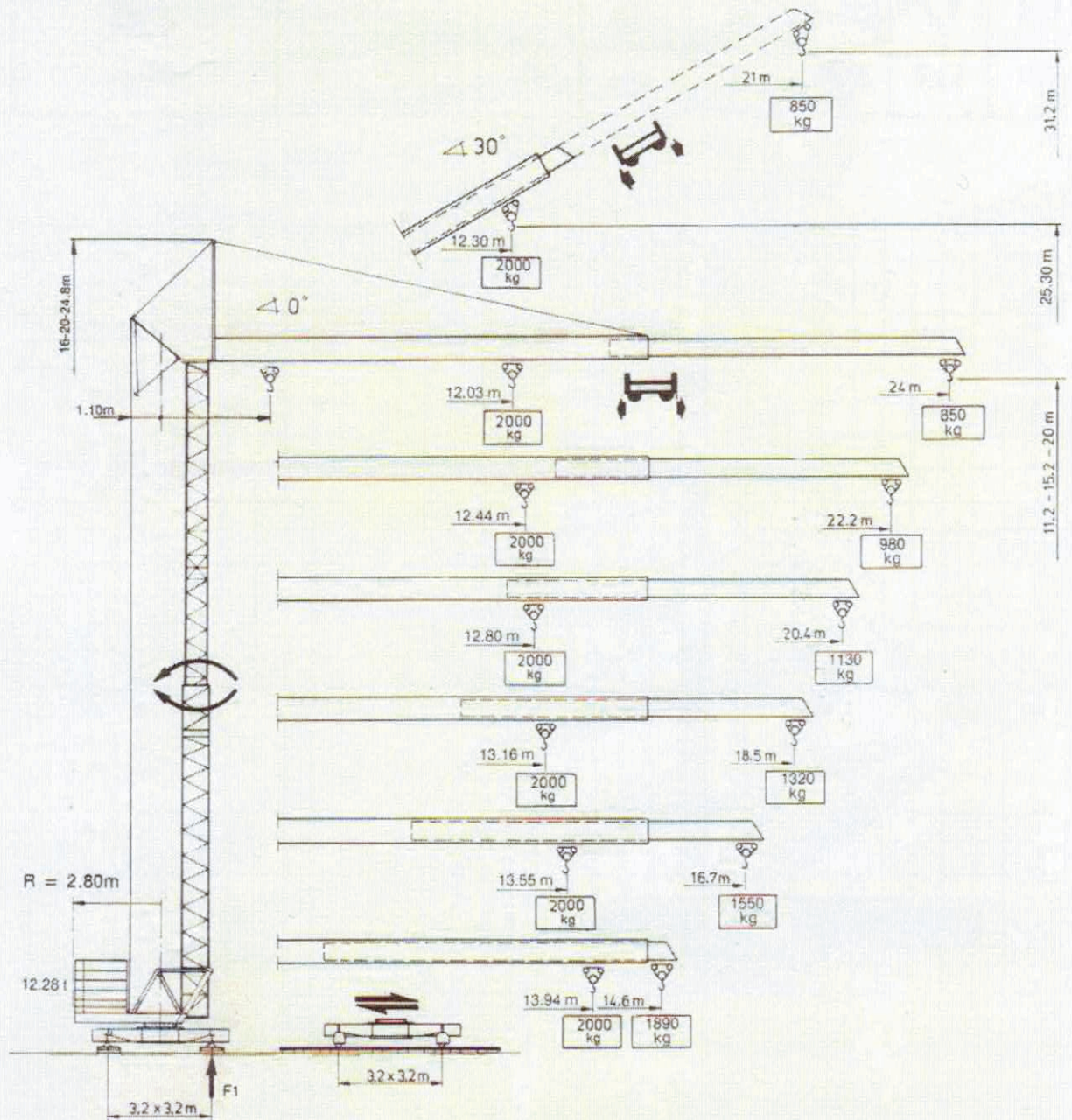


ARCOMET N.V.

T24 A















$R = 1.75\text{ m} = \text{CITY (CT)}$

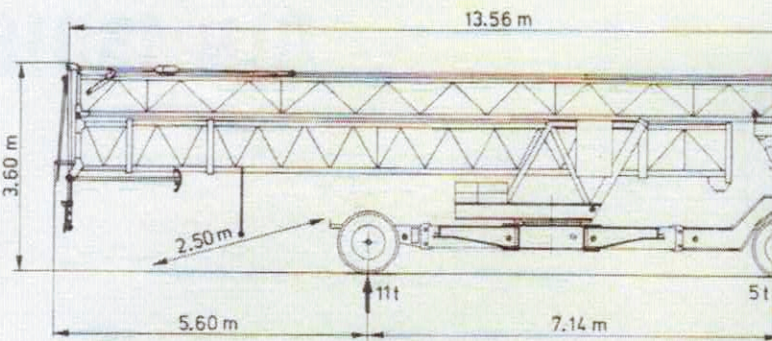
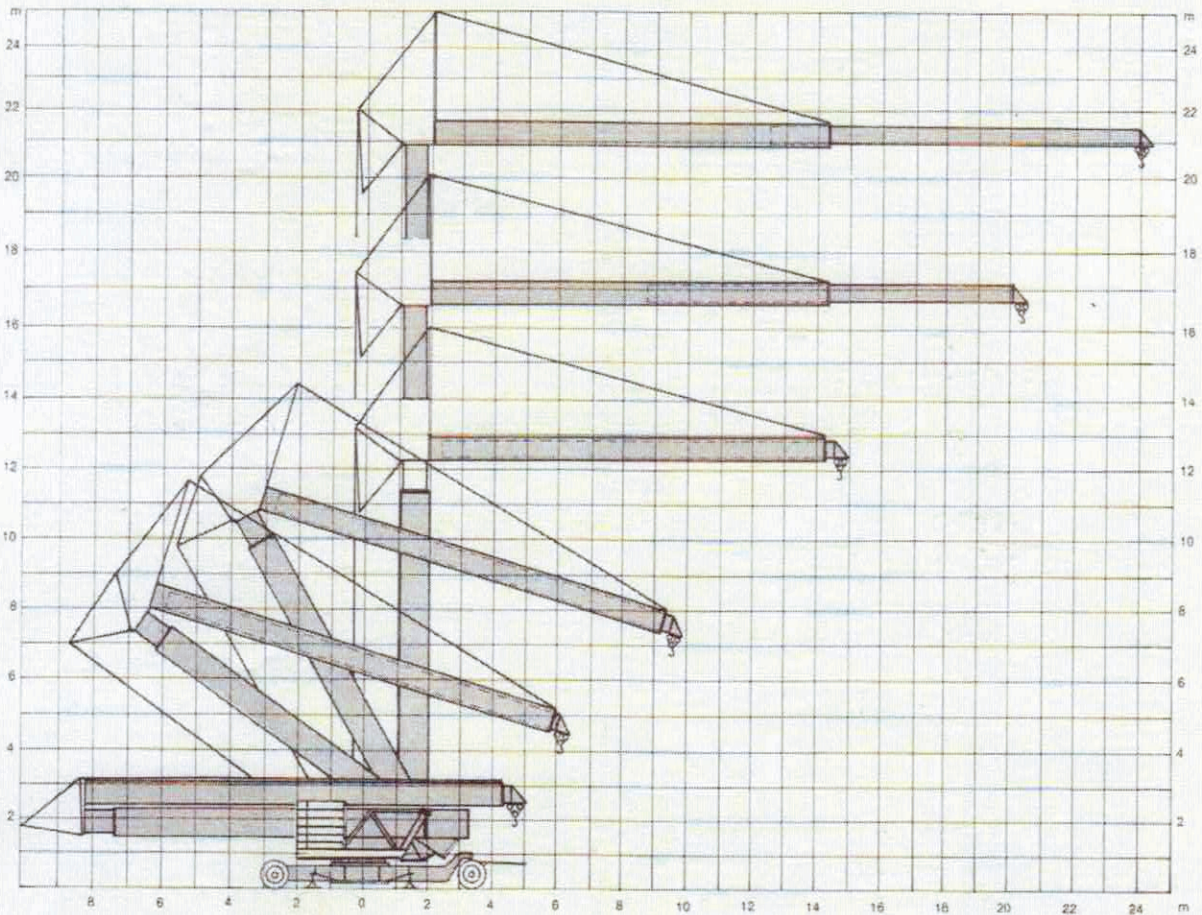
DIN 15018

H1 - B3

F1	In bedrijf - En service - In service - In Betrieb - En servicio	142 kN
	Buiten bedrijf - Hors service - Out of service - Ausser Betrieb - Fuera de servicio	130 kN

* 10 kN \approx 1 t

		m/min	kg			kW		
  9 kW		5	2000		30 m/min	1.5	 220 - 380V / 50 Hz 19 kVA	
		22.5	2000		0 = 1 rpm rpm U/min	2.2		
		45	1000		25 m/min	2 x 1	 35 kVA	
		5	2000		zonder ballast zonder transportaer sans lest, sans train without towing axle ohne Ballast, ohne Transportachse sin lastre, ni tren de transporte	ca. 9600 kg		



TKÖHLER
BAUMASCHINEN GmbH
 Thomas Köhler

Thomas Köhler Tel.: +49 (0) 7227 993658
 Baumaschinen GmbH Fax: +49 (0) 7227 993659
 Am Birkenweiher 25 Mobil: +49 (0) 17660901241
 77839 Lichtenau thomas@baumaschinen-koehler.de