

ARCOMET

www.arcomet.com



LASTENTABEL - COURBES DE CHARGES - LOAD CURVES - LASTKURVEN - CURVE DI CARICO - CURVAS DE CARGAS

m	2,20 - 14,41	16	19	22	25	28	31	33	36	38	42	45
kg	5000	4420	3616	3047	2625	2298	2038	1892	1705	1598	1415	1300
ft	7'3" - 47'3"	52'6"	62'4"	72'2"	82'0"	91'10"	101'8"	108'3"	118'1"	124'8"	137'10"	147'8"
lbs	11 020	9740	7970	6720	5790	5070	4490	4170	3760	3520	3120	2870

m	2,20 - 15,06	16	19	22	25	28	31	33	36	38	42
kg	5000	4660	3813	3215	2771	2428	2155	2002	1805	1692	1500
ft	7'3" - 49'5"	52'6"	62'4"	72'2"	82'0"	91'10"	101'8"	108'3"	118'1"	124'8"	137'10"
lbs	11 020	10 270	8410	7090	6110	5350	4750	4410	3980	3730	3310

m	2,20 - 15,46	16	19	22	25	28	31	33	36	38
kg	5000	4805	3934	3318	2861	2507	2226	2068	1866	1750
ft	7'3" - 50'9"	52'6"	62'4"	72'2"	82'0"	91'10"	101'8"	108'3"	118'1"	124'8"
lbs	11 020	10 590	8670	7320	6310	5503	4910	4560	4110	3860

m	2,20 - 15,95	16	22	25	28	31	33
kg	5000	4983	3444	2970	2604	2313	2150
ft	7'3" - 52'4"	52'6"	72'2"	82'0"	91'10"	101'8"	108'3"
lbs	11 020	10 990	7590	6550	5740	5100	4740



m	2,20 - 26,51	30	32	34	36	38	42	45
kg	2500	2169	2013	1876	1755	1648	1465	1350
ft	7'3" - 86'12"	98'5"	104'12"	111'7"	118'1"	124'8"	137'10"	147'8"
lbs	5510	4780	4440	4140	3870	3630	3230	2980

HOEKDRUKKEN - RÉACTIONS - REACTIONS - ECKDRÜCKE - REAZIONI - REACCIONES



m	45	256	kN
ft	147'8"	58	kips
	42	255	
	137'10"	57	
	38	250	
	124'8"	56	
	33	240	
	108'3"	54	



m	45	200	kN
ft	147'8"	45	kips
	42	192	
	137'10"	43	
	38	178	
	124'8"	40	
	33	157	
	108'3"	35	



kg	18 200
lbs	40 120

AANDRIJVINGEN - MÉCHANISMES - MECHANISMS - ANTRIEBE - MECCANISMI - MECANISMOS



max. 2500 kg			
m/min	6,0	25,0	50,0
kg	2500	2500	1400
fpm	20	82	164
lbs	5510	5510	3090
kW	2,4	15,0	15,0
HP	~3,2	~20,1	~20,1

max. 5000 kg			
m/min	3,0	12,5	25,0
kg	5000	5000	2800
fpm	10	41	82
lbs	11 020	11 020	6170
kW	2,4	15,0	15,0
HP	~3,2	~20,1	~20,1



m/min	25 / 50	5,5 kW
fpm	~82 / 164	~7,4 HP

m/min	25 / 50	5,5 kW
fpm	~82 / 164	~7,4 HP



tr/min	0 - 0,8	4,8 kW
		~6,4 HP

tr/min	0 - 0,8	4,8 kW
		~6,4 HP



m/min	25	2 x 1,5 kW
fpm	82	~2 x 2 HP

m/min	25	2 x 1,5 kW
fpm	82	~2 x 2 HP

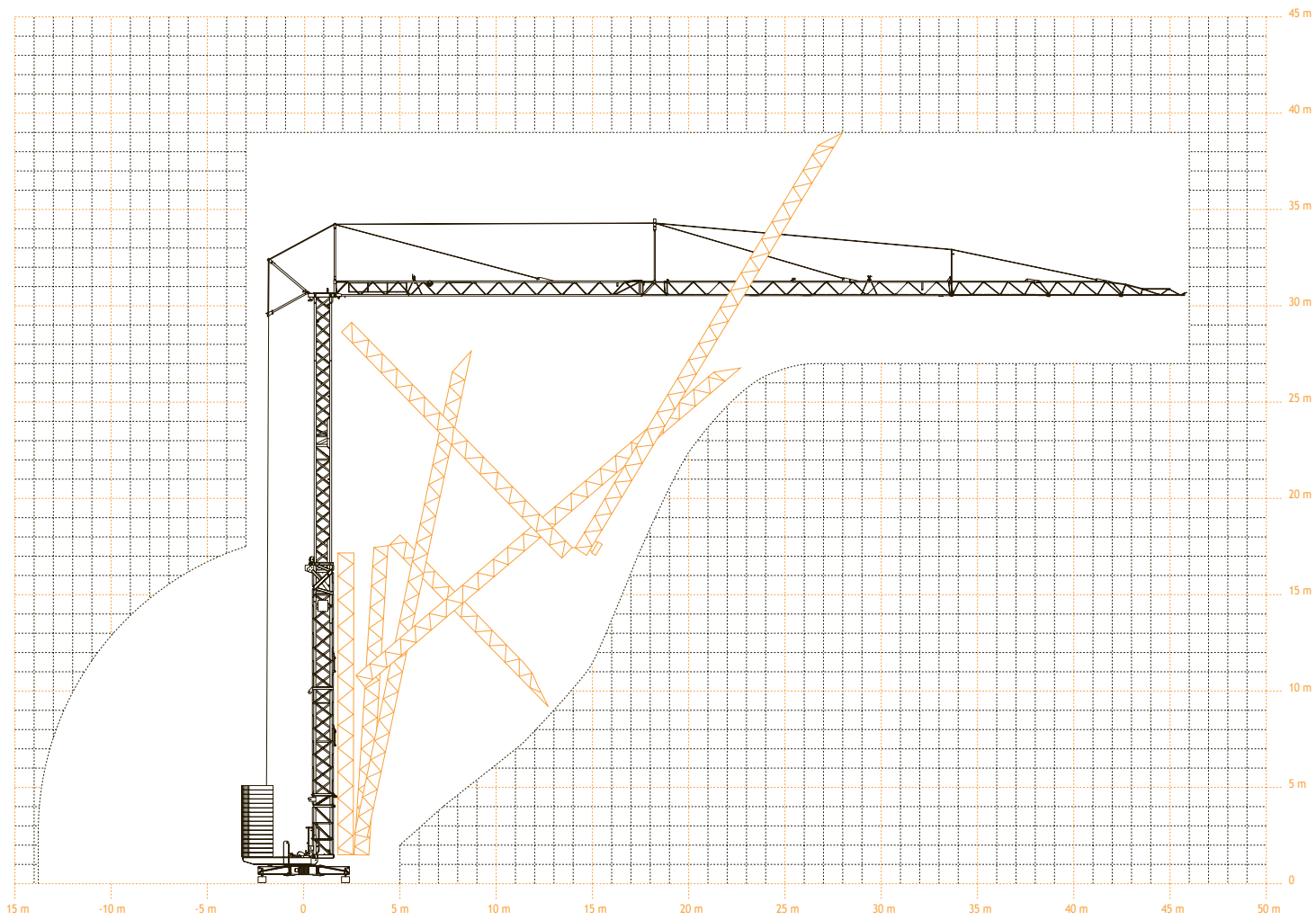


kVA	32
-----	----

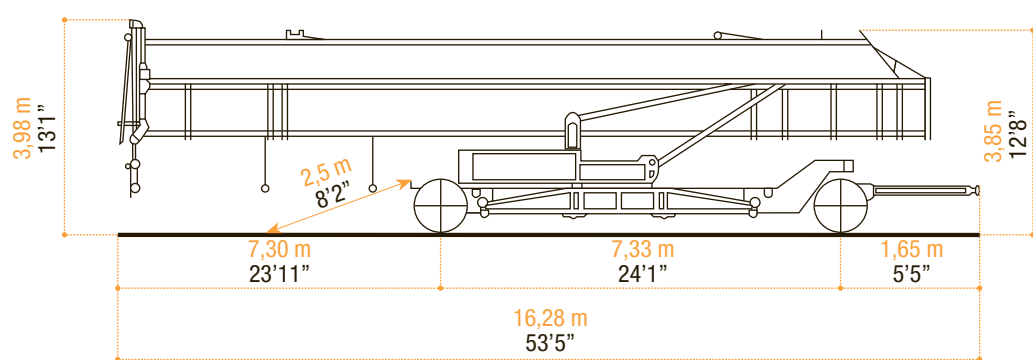



















V	380 V - 50 Hz
---	---------------

VEREISTE MONTAGERUIMTE - ENCOMBREMENT AU MONTAGE - SPACE REQUIREMENT - ABMESSUNGEN - SPAZIO NECESSARIO PER IL MONTAGGIO



TRANSPORT



 <ul style="list-style-type: none"> • in bedrijf • en service • in service • in Betrieb • in servizio • en servicio 	 <ul style="list-style-type: none"> • buiten bedrijf • hors service • out of service • außer Betrieb • fuori servizio • fuera de servicio 	 <ul style="list-style-type: none"> • hijsen • levage • hoisting • heben • sollevamento • elevación 	 <ul style="list-style-type: none"> • loopkatrjden • chariotage • jib trolleying • Katzfahren • traslazione carrello • poleas móviles 	 <ul style="list-style-type: none"> • zwenken • orientation • slewing • Schwenken • rotazione • orientación 	 <ul style="list-style-type: none"> • spanning • tension • voltage • spannung • tensione • tensión 	 <ul style="list-style-type: none"> • gewicht zonder ballast • poids propre sans lest • weight without ballast • gewicht ohne Ballast • peso senza zavorra • peso sin lastre
 <ul style="list-style-type: none"> • lengte • longueur • length • länge • lunghezza • longitud 	 <ul style="list-style-type: none"> • spoor • translation • rail • Kranfahren • carreggiata • rail 	 <ul style="list-style-type: none"> • vermogen • puissance • power • leistung • potenza • potencia 	 <ul style="list-style-type: none"> • micro snelheid • vitesse • speed • Geschwindigkeit • velocità • velocidad 	 <ul style="list-style-type: none"> • 2^o snelheid • 2^o vitesse • 2^o speed • 2^o Geschwindigkeit • 2^o velocità • 2^o velocidad 	 <ul style="list-style-type: none"> • 3^o snelheid • 3^o vitesse • 3^o speed • 3^o Geschwindigkeit • 3^o velocità • 3^o velocidad 	 <ul style="list-style-type: none"> • maximale hoekdruk • réactions • reactions • Eckdrücke : 10 kN = 1t • press. angolare massima • presión angular máxima
 <ul style="list-style-type: none"> • enkel inschering zonder hijsblok • simple mouflage sans moufle • 2 fall reeving without houstingblock • 2 Fach Einsicherung ohne Hakenflasche • passaggio semplice senza paranca • solamente elevación sin polea 	 <ul style="list-style-type: none"> • enkel inschering met hijsblok • simple mouflage avec moufle • 2 fall reeving with houstingblock • 2 Fach Einsicherung mit Hakenflasche • passaggio semplice con paranca • solamente elevación con polea 	 <ul style="list-style-type: none"> • dubbel inschering • double mouflage • 4 fall reeving • 4 Fach Einsicherung • passaggio doppio • elevación doble 				

Konform richtlijn 2000/14/EG betreffende geluidsemissie van materieel voor gebruik buitenshuis en wijzigingen. - également conforme aux dispositions de la directive "émission sonores des équipements utilisés à l'extérieur des bâtiments" 2000/14/CE et aux législations la transposant. - Requirements of directive 2000/14/CE "noise emission in the environment by equipment for use outdoors, as amended. - Bestimmung der Richtlinie "Lärmübertragung des ausserhalb der Gebäude benutzten Ausrüstungen" 2000/14/EG und den gesetzlichen Vorschriften.



ARCOMET

Industrieweg 139 - 3583 Paal-Beringen - BELGIUM - T +32 (0)11 450 950 - EMAIL arcomet@arcomet.com - www.arcomet.com