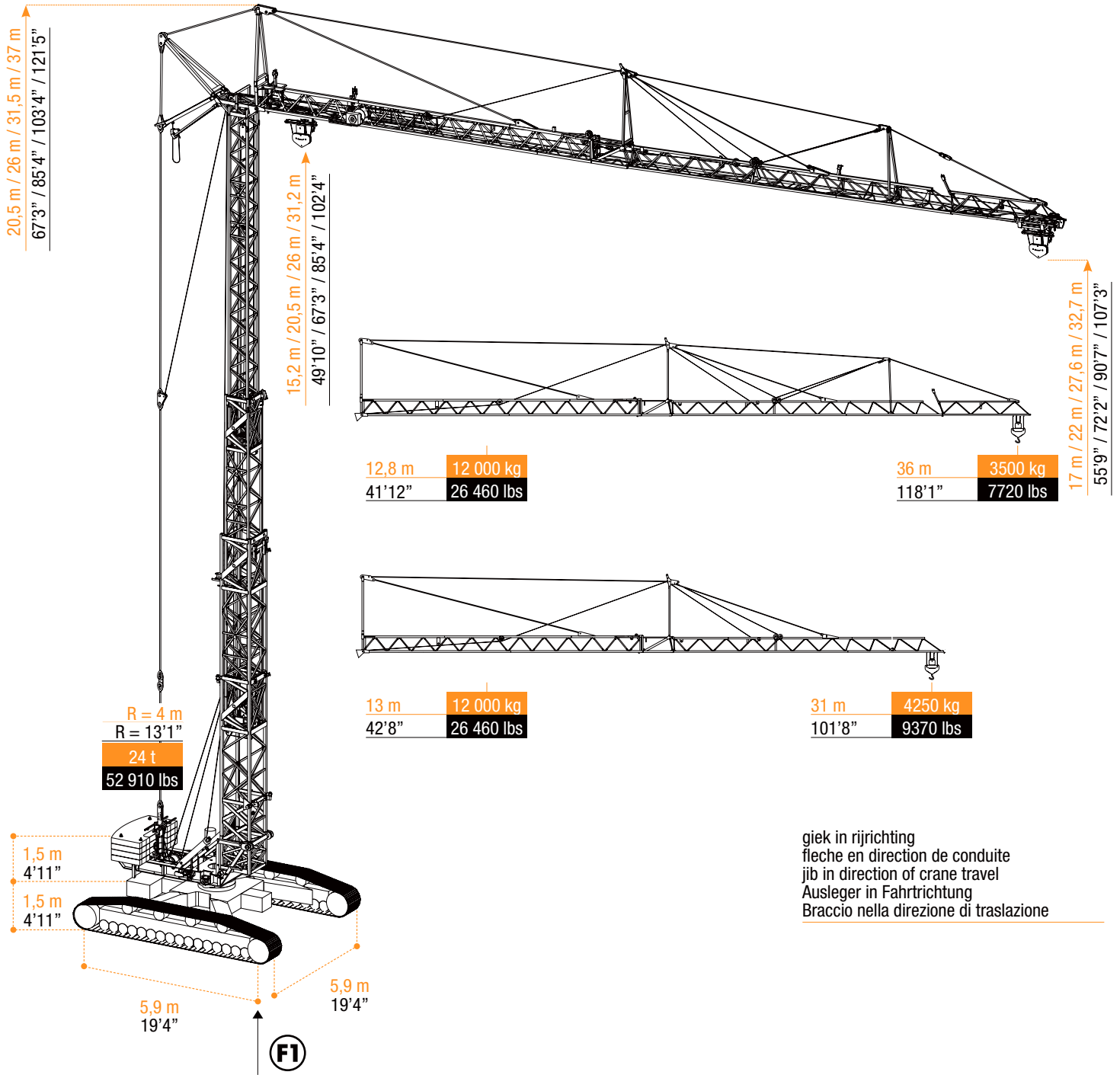


Snelmontagekraan
Grue à montage rapide
Schnelleinsatzkran
Self erecting crane

A 45CR

RML

kraan op rups
grue sur chenilles
crawler-crane
RauPenkran



giek in rijrichting
fleche en direction de conduite
jib in direction of crane travel
Ausleger in Fahrtrichtung
Braccio nella direzione di traslazione

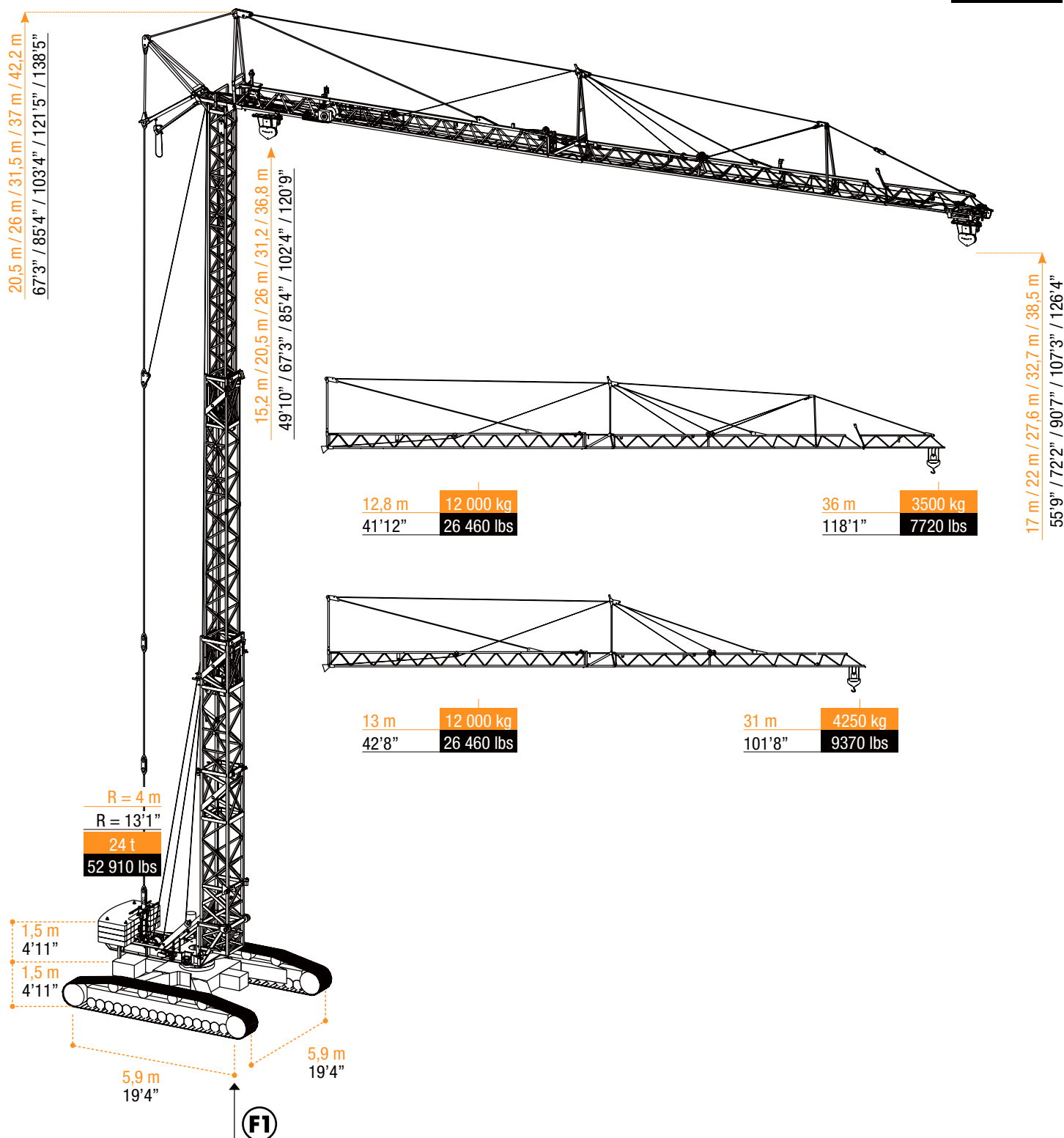


ARCOMET

www.arcomet.com


















STATIONAIR

STATIONAIR



MONTAGE PRINCIPE IDENTIEK AAN A 45B - SYSTÈME DE MONTAGE IDENTIQUE À LA A 45B

CRANE ERECTION SYSTEM IDENTICAL AS A 45B - KRANMONTAGESYSTEM GLEICH WIE A 45B - SISTEMA DI MONTAGGIO UGUALE COME A 45B

 <ul style="list-style-type: none"> •in bedrijf •en service •in service •in Betrieb •in servizio •en servicio 	 <ul style="list-style-type: none"> •buiten bedrijf •hors service •out of service •außer Betrieb •fuori servizio •fuera de servicio 	 <ul style="list-style-type: none"> •hijsen •levage •hoisting •heben •sollevamento •elevación 	 <ul style="list-style-type: none"> •loopkatrijden •chariotage •jib trolleying •Katzfahren •traslazione carrello •poleas móviles 	 <ul style="list-style-type: none"> •zwenken •orientation •slewing •Schwenken •rotazione •orientación 	 <ul style="list-style-type: none"> •spanning •tension •voltage •spannung •tensione •tensión 	 <ul style="list-style-type: none"> •gewicht zonder ballast •poids propre sans lest •weight without ballast •gewicht ohne Ballast •peso senza zavorra •peso sin lastre
 <ul style="list-style-type: none"> •lengte •longueur •length •länge •lunghezza •longitud 	 <ul style="list-style-type: none"> •spoor •translation •rail •Kranfahren •carreggiata •rail 	 <ul style="list-style-type: none"> •vermogen •puissance •power •leistung •potenza •potencia 	 <ul style="list-style-type: none"> •micro snelheid •vitesse •speed •Geschwindigkeit •velocità •velocidad 	 <ul style="list-style-type: none"> •2^o snelheid •2^o vitesse •2^o speed •2^o Geschwindigkeit •2^o velocità •2^o velocidad 	 <ul style="list-style-type: none"> •3^o snelheid •3^o vitesse •3^o speed •3^o Geschwindigkeit •3^o velocità •3^o velocidad 	 <ul style="list-style-type: none"> •maximale hoekdruk •réactions •reactions •Eckdrücke : 10 kN = 1t •press. angolare massima •presión angular máxima
 <ul style="list-style-type: none"> •enkel inschering zonder hijsblok •simple mouflage sans moufle •2 fall reeving without houstingblock •2 Fach Einscherung ohne Hakenflasche •passaggio semplice senza paranca •solamente elevación sin polea 	 <ul style="list-style-type: none"> •enkel inschering met hijsblok •simple mouflage avec moufle •2 fall reeving with houstingblock •2 Fach Einscherung mit Hakenflasche •passaggio semplice con paranca •solamente elevación con polea 	 <ul style="list-style-type: none"> •dubbel inschering •double mouflage •4 fall reeving •4 Fach Einscherung •passaggio doppio •elevación doble 				

Konform richtlijn 2000/14/EG betreffende geluidsemissie van materieel voor gebruik buitenshuis en wijzigingen. - également conforme aux dispositions de la directive "émission sonores des équipements utilisés à l'extérieur des bâtiments" 2000/14/CE et aux législations la transposant. - Requirements of directive 2000/14/CE "noise emission in the environment by equipment for use outdoors, as amended. - Bestimmung der Richtlinie "Lärmübertragung des ausserhalb der Gebäude benutzten Ausrüstungen" 2000/14/EG und den gesetzlichen Vorschriften.



ARCOMET

Industrieweg 139 - 3583 Paal-Beringen - BELGIUM - T +32 (0)11 450 950 - EMAIL arcomet@arcomet.com - www.arcomet.com